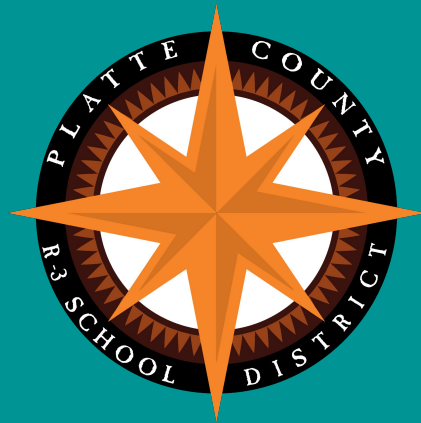




# Capital Improvement Planning FY 26

Board of Education Work Session  
February 2025



# 2025-26 Proposed Capital Improvements

- Capital improvement projects prioritized by criteria:
  - Safety & compliance
  - Facility condition
  - Efficiency
  - Educational programming
  - Connection to strategic initiatives

## Background

The following items have been identified as priority Capital Improvement Projects for budget planning purposes. Categories have been identified as having the highest priority based on facility assessments from our Operations Department, feedback from building principals, analysis of work orders, and facility walks with our architect.



# Facility Improvement Categories

- **MEP:** HVAC equipment/piping, design, commissioning, plumbing, electrical, fire-alarm tie-in
- **Parking Lots:** survey, design, special inspections, geotech, oil indexing, materials, striping
- **Building Envelope:** Foundation, wall assemblies, roofing systems, doors/doorways, chimney vents, windows, glazing, caulk, mortar joints, soffits, powerwashing
- **Roofs:** roofing membrane, coping caps, flashings, RTU flashings, gas line work, electrical work, warranty work
- **Playgrounds:** equipment, safety surface, sitework, drainage, 3rd-party testing, fencing, cameras, lighting
- **Storefronts/Windows/Door:** doors, windows, window treatments, hardware, access control, ADA openers, security glass, flooring repairs, interior finish repairs
- **Building Interiors:** flooring of all types, casework, interior doors, painting, ceilings, lighting, abatements
- **Keying:** hardware change-outs, key upgrades



# Facility Improvement Categories

- **Safety/Security:** access control, hardware, cameras, visitor management, video viewing software, glass film, fire alarms, intercom, intrusion alarms, signage
- **Food Service:** food service equipment, kitchen flooring, hood systems, inspections
- **Building Automation Systems:** HVAC/lighting/pump controls, utility meters
- **Vehicles/Buses:** maintenance fleet, box truck, utility truck, buses
- **Equipment:** lifts, trailers, skid steers, sports and theatre equipment, band/vocal equipment, custodial large machines
- **Furniture:** design, classroom furniture, office furniture, cafeteria tables
- **Grounds:** dirt work, sidewalks, mulch, landscaping, signage, site maintenance, winter maintenance, exterior improvements
- **Extra Curricular:** stadium bleachers, sound systems, field/track replacements
- **Gym Floors:** floor refinishes, repairs, log stencils, staining VS painting the block, bleacher wheel repairs, sleeve replacement
- **Technology:** cabling, network switches, access points, servers, intercom, clock integration, devices



# Long-Range Facility Master Plan (Year 3 of plan)

## 1-5 YEARS - FACILITY MASTER PLAN RECOMMENDATIONS

Funding Source	Project Recommendations
<p><b>Annual Capital Improvement Budget</b></p>	<p><b>Barry Elementary:</b> Continue PreK-5th grade building interior renovations (Completed)</p> <p><b>Pathfinder Elementary:</b> Begin site improvements to playgrounds 2025 Bond</p> <p><b>Early Childhood:</b> Expand access in existing facilities per recommendations of Early Childhood Committee In Progress</p> <p><b>District-Wide Improvements/Maintenance:</b> Continue improvements/upgrades to safety, technology, infrastructure, parking lots, roofs, furniture/learning spaces In Progress</p>
<p><b>Potential Bond Issue* (~Spring 2025)</b></p>	<p><b>Platte County High School:</b> Complete next phase of PCHS Rebuild (classroom wing/media center/fine arts/main entry) 2025 Bond</p> <p><b>Platte Purchase Middle School:</b> Complete site amenities (activities complex bleachers (Completed), restrooms, concessions 2025 Bond, press box)</p> <p><b>Compass and Pathfinder Elementaries:</b> Expand parking lot and improve traffic flow (Completed at Pathfinder) 2025 Bond</p>
<p><b>Private &amp; State Grant Funding</b></p>	<p><b>Northland Workforce Development Center:</b> Construct Phase 1 New Career/Technical Education Facility</p>

*\*All bond dates are subject to change based on student enrollment, financial feasibility, and board approval*



# Long-Range Facility Master Plan (Year 3 of plan)

## 6-10 YEARS - FACILITY MASTER PLAN RECOMMENDATIONS

Funding Source	Project Recommendations
<p><b>Annual Capital Improvement Budget</b></p>	<p><b>Siegrist Elementary:</b> Expand and renovate kitchen; classroom renovations <b>In Progress</b></p> <p><b>District-Wide Improvements/Maintenance:</b> Continue improvements/upgrades to safety, technology, infrastructure, parking lots, roofs, furniture/learning spaces</p>
<p><b>Potential Bond Issues* (~2030- 2033)</b></p>	<p><b>New Elementary:</b> Construct new elementary (timing based on student enrollment need)</p> <p><b>Early Childhood:</b> Expand access per recommendations of Early Childhood Committee</p> <p><b>Platte County High School:</b> Complete master plan (additional classrooms and support spaces)</p> <p><b>Platte Purchase Middle School:</b> Complete master plan (additional classrooms and support spaces)</p> <p><b>Platte City Middle School:</b> Construct additional classrooms and support spaces</p> <p><b>Current NCC Facility and Paxton Center:</b> Repurpose facilities (scope TBD)</p>

*\*All bond dates are subject to change based on student enrollment, financial feasibility, and board approval*



# Long-Range Facility Master Plan (Year 3 of plan)

## 11-15 YEARS - FACILITY MASTER PLAN RECOMMENDATIONS

Funding Source	Project Recommendations
<p><b>Annual Capital Improvement Budget</b></p>	<p><b>District-Wide Improvements/Maintenance:</b> Continue improvements/upgrades to safety, technology, infrastructure, parking lots, roofs, furniture/learning spaces</p>
<p><b>Potential Bond Issues* (~2030- 2033)</b></p>	<p><b>High School #2:</b> Construct Phase 1 of High School #2 (timing based on student enrollment need)  <b>Support Services South Campus:</b> Construct new maintenance/bus warehouse with expanded bus parking  <b>Additional Facility Improvements:</b> Renovations and deferred maintenance of existing facilities based on facility condition analysis</p>

*\*All bond dates are subject to change based on student enrollment, financial feasibility, and board approval*



# 5-Year Plan Summary

Facility Category	FY26	FY27	FY28	FY29	FY30	Totals
MEP	\$85,000	\$72,000	\$72,000	\$72,000	\$360,000	\$661,000
Parking Lots	\$122,000	\$34,000	\$66,000	\$67,000	\$20,000	\$309,000
Building Envelope	\$18,000	\$27,000	\$27,000	\$27,000	\$27,000	\$126,000
Roofs	\$175,000	\$200,000	\$1,650,000	\$920,000	\$240,000	\$3,185,000
Playgrounds	\$10,000	\$810,000	\$80,000	\$20,000	\$85,000	\$1,005,000
Windows/Door	\$15,000	\$20,000	\$20,000	\$10,000	\$20,000	\$85,000
Building Interiors	\$1,192,663	\$156,000	\$142,000	\$1,338,000	\$66,000	\$2,894,663
Keying	\$5,000	\$5,000	\$5,000	\$5,000	\$5,000	\$25,000
Safety/Security	\$53,000	\$60,000	\$60,000	\$60,000	\$60,000	\$293,000
Food Service	\$20,000	\$35,000	\$35,000	\$35,000	\$35,000	\$160,000
BAS System	\$0	\$20,000	\$20,000	\$20,000	\$20,000	\$80,000
Vehicles / Buses	\$350,000	\$350,000	\$350,000	\$350,000	\$350,000	\$1,750,000
Equipment	\$17,750	\$35,000	\$55,000	\$50,000	\$50,000	\$207,750
Furniture	\$305,075	\$163,000	\$162,000	\$208,000	\$114,000	\$952,075
Grounds	\$30,300	\$85,000	\$20,000	\$20,000	\$20,000	\$175,300
Extra Curricular	\$856,700	\$200,000	\$1,000,000	\$1,000,000	\$20,000	\$3,076,700
Gym Floors	\$15,000	\$25,000	\$25,000	\$25,000	\$25,000	\$115,000
Technology	\$400,000.00	\$790,000	\$815,000	\$790,000	\$790,000	\$3,585,000
<b>Totals</b>	<b>\$3,670,488</b>	<b>\$3,087,000</b>	<b>\$4,604,000</b>	<b>\$5,017,000</b>	<b>\$2,307,000</b>	<b>\$18,685,488</b>





# FY 25 Budget (Review)

Facility Category	FY25
MEP	\$72,000
Parking Lots	\$80,000
Building Envelope	\$138,000
Roofs	\$200,000
Playgrounds	\$71,000
Windows/Door	\$25,000
Building Interiors	\$1,558,518
Keying	\$5,000
Safety/Security	\$237,200
Food Service	\$35,000
BAS System	\$20,000
Vehicles	\$50,000
Equipment	\$146,900
Furniture	\$134,000
Grounds	\$25,000
Extra Curricular	\$20,000
Gym Floors	\$15,000
Technology Infrastructure	\$85,000
<b>Totals</b>	<b>\$2,917,618</b>

## FY25 Budget (Total Operations)

Capital Outlay Budget	\$2,917,618
Bus Purchase Budget	\$300,000
Technology Device Budget	\$344,000
<b>Total</b>	<b>\$3,261,618</b>



# 2024-25 Major Capital Projects



## PCR-3 Capital Improvement Planning 2025-26

Facility Improvement Category	General Description <i>*Major Projects In Each Improvement Category / Does Not Include All Capital Projects*</i>	Estimated Budget Impact
MEP	Boom lights Wilson Auditorum, Siegrist HVAC Compressor, Siegrist boys urinals	\$85,000
Parking Lots	DEC/NRAD parking lot and NCC front lot repair	\$122,000
Building Envelope	Gutter repairs District-wide	\$18,000
Roofs	Pathfinder, Barry, NCC roof repairs	\$175,000
Playgrounds	Outdoor furniture Pathfinder playground	\$10,000
Windows/Door	Barry window replacement and exterior door replacement	\$15,000
Building Interiors	Paxton Remodel (Phase Two) / Carpet PCMS and Siegrist / PCHS Science lab conversion	\$1,192,663
Keying	Update key schedule throughout the district	\$5,000
Safety/Security	Additional card access and security cameras throughout the District	\$53,000
Food Service	Food service annual equipment replacement	\$20,000
Building Systems	No intended projects related to BAS	\$0
Vehicles/Buses	Maintenance one ton service truck	\$350,000
Equipment	22' tilt trailer, rolling mirrors vocal department, electric piano vocal	\$17,750
Furniture	Furniture refresh Siegrist, PPMS, PCMS, Early childhood, cafeteria tables	\$305,075
Grounds	Sidewalks Compass playground and transportation offices, site storage PCMS	\$30,300
Extra Curricular	Pirate stadium visitor bleachers, tennis court resurfacing, band uniforms	\$856,700
Gym Floors	Gym floor maintenance (PCMS, Barry, PCHS)	\$15,000
Technology	Gym projectors Siegrist, Compass, Barry, PCMS / Devices districtwide	\$400,000
<b>Total:</b>	<b>Capital Improvement Planning Estimated Total For 2025-26</b>	<b>\$3,670,488</b>

- Capital Improvement Projects will be funded through our annual Fund 4 budget
- List of major projects planned for the 2025-26 school year.
- Other smaller projects are accounted for in the 5-Year Facility and Operation Capital Projects Plan
- [PCR-3 Capital Improvement Planning 2025-26](#)





Platte Purchase Middle School  
 9400 N Platte Purchase Dr.  
 Kansas City, MO 64155  
 816.436.1433



**Additional Capital Outlay**  
 Additional 15 student desks, 15 high top desks, 15 student chairs, 15 student high top chairs  
 Blade for John Deere

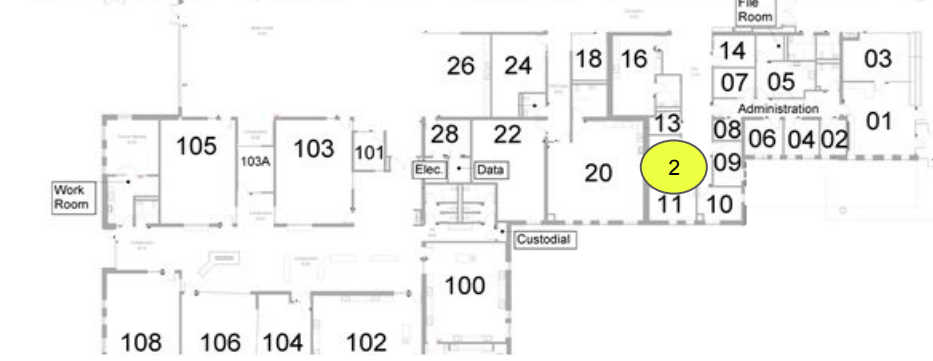
1



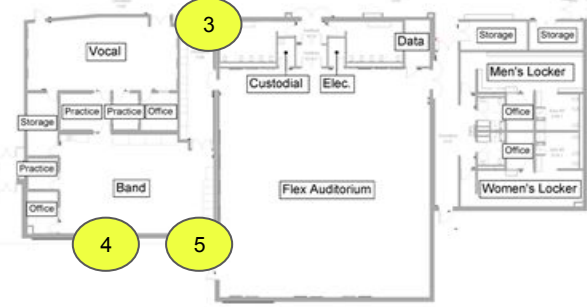
7



6



2



3

4

5

1

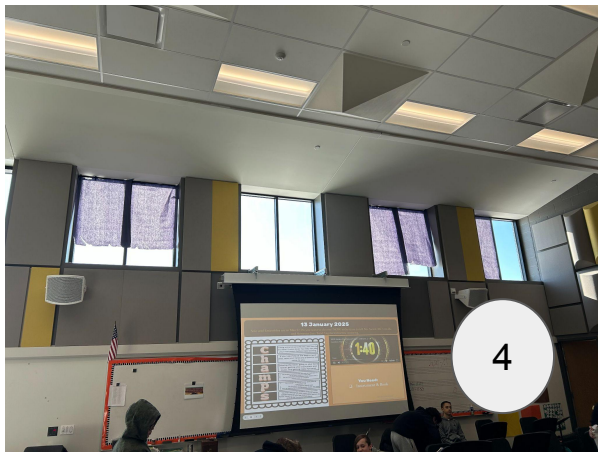
Door  
access  
card  
reader

Camera to  
capture students  
waiting for admin  
and counselor

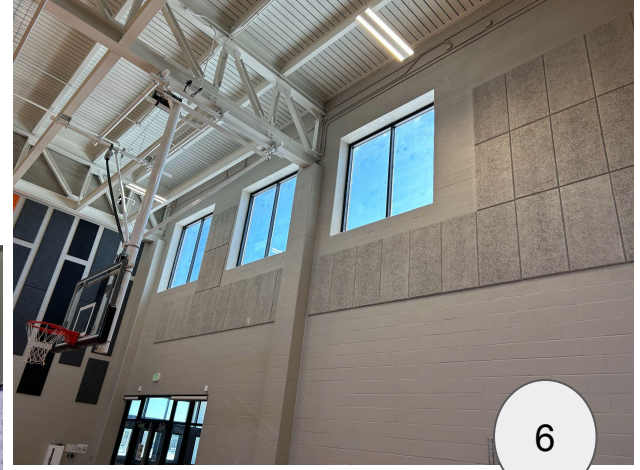
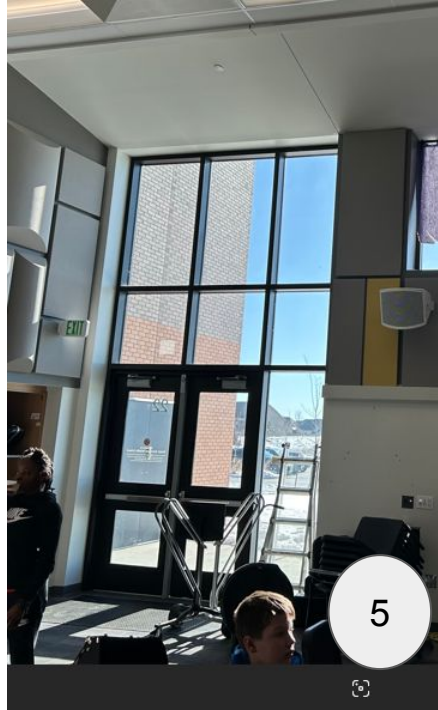
2

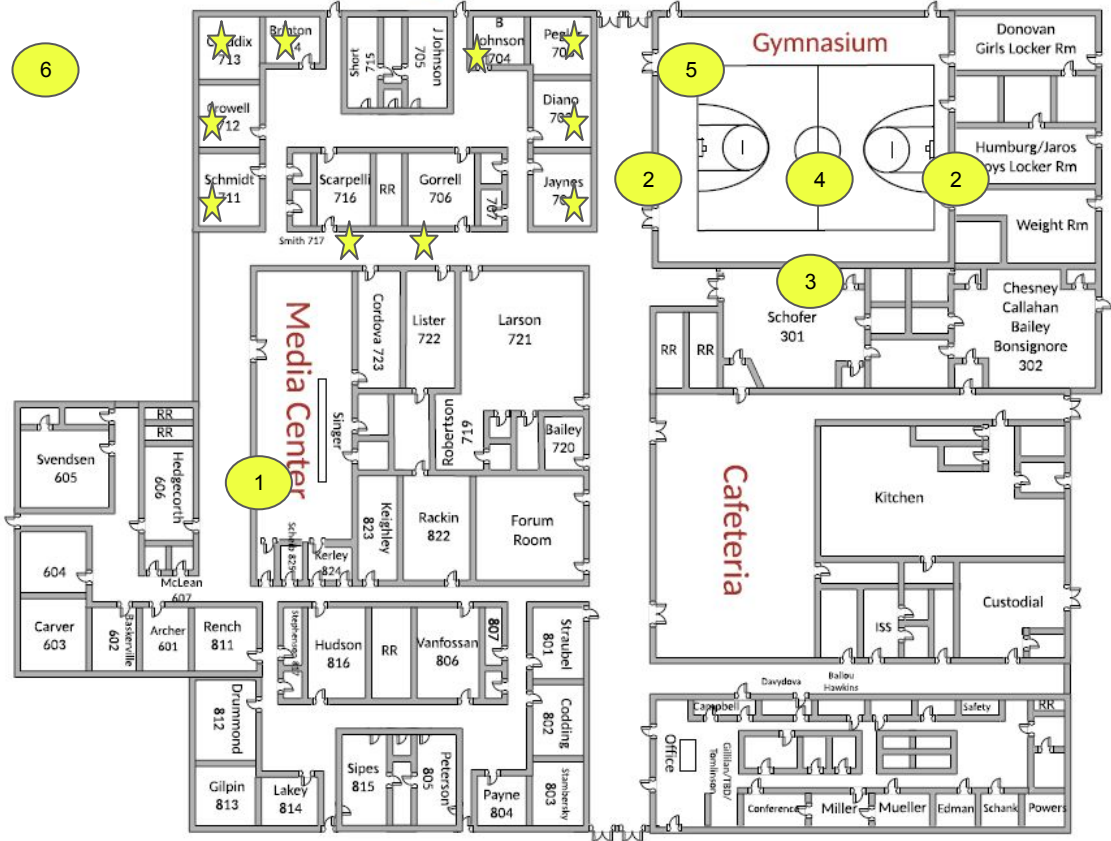
Camera to capture  
band lockers and  
entering/exiting flex  
performance

3



Add Window  
Shades

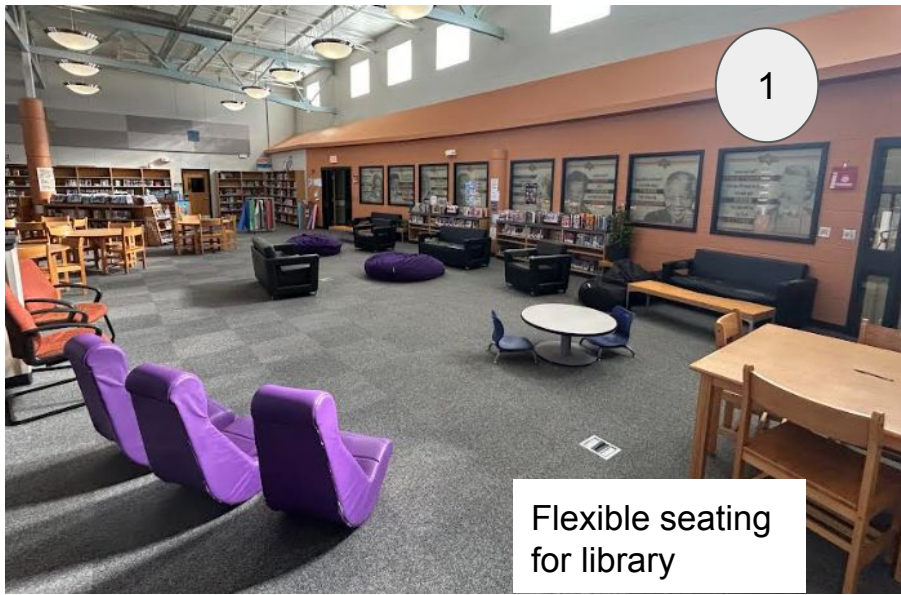




★ Classrooms will get new carpet and furniture (4 high top desks, 16 standard desks, 8 high top chairs, 16 standard chairs, 4 ottomans, 1 round table) **RFP required**

**Additional Capital Outlay Projects**

- 3 Scorers table, volleyball ladder
- 4 Gym projector
- 5 Vinyl bleacher covers
- 6 Onsite storage (**Relocate PPMS storage unit once site amenities complete**)



Flexible seating  
for library

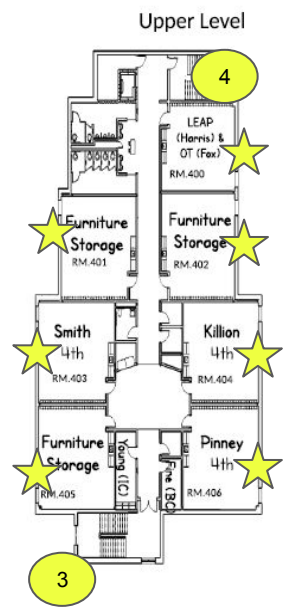
Add picture of gym  
mats



Pathfinder Elementary K-4  
 1951 NW 87<sup>th</sup> Terrace Kansas City, MO 64154  
 816.436.6670



**Teacher Locations**  
**2024-25 School Year**  
 (Last Updated 6/11/24)



**6** 14 rooms will be repainted to eliminate the whiteboard paint and a new physical 12' x 4' whiteboard will be installed.

FFE for 3 EC classrooms

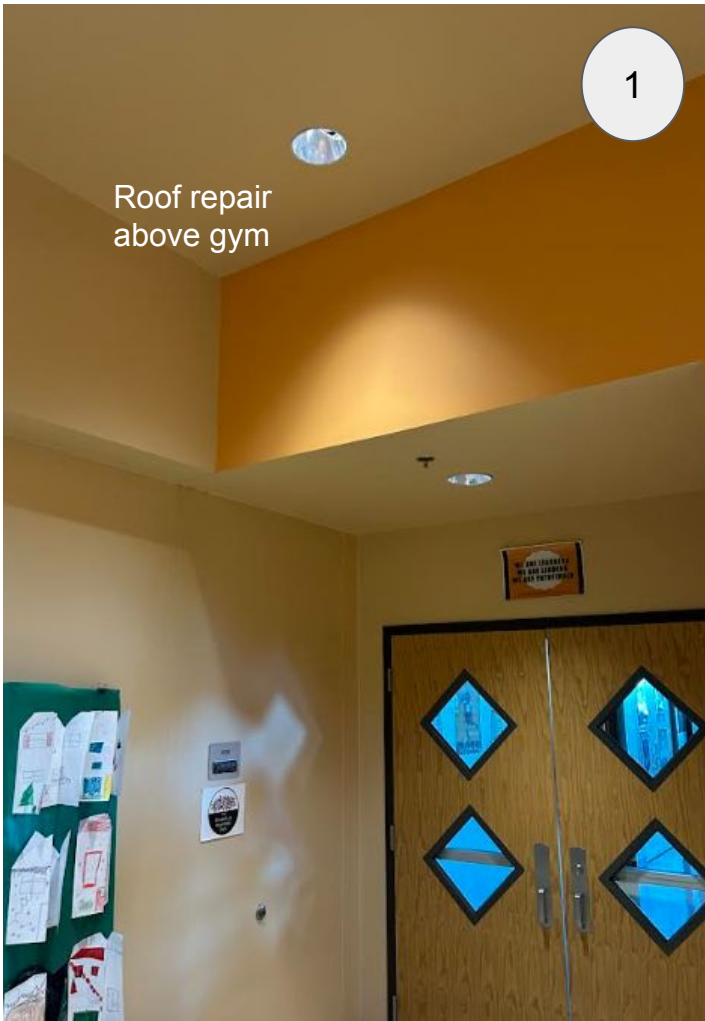
Outdoor furniture for new outside learning area

Dirtwork for erosion control



1

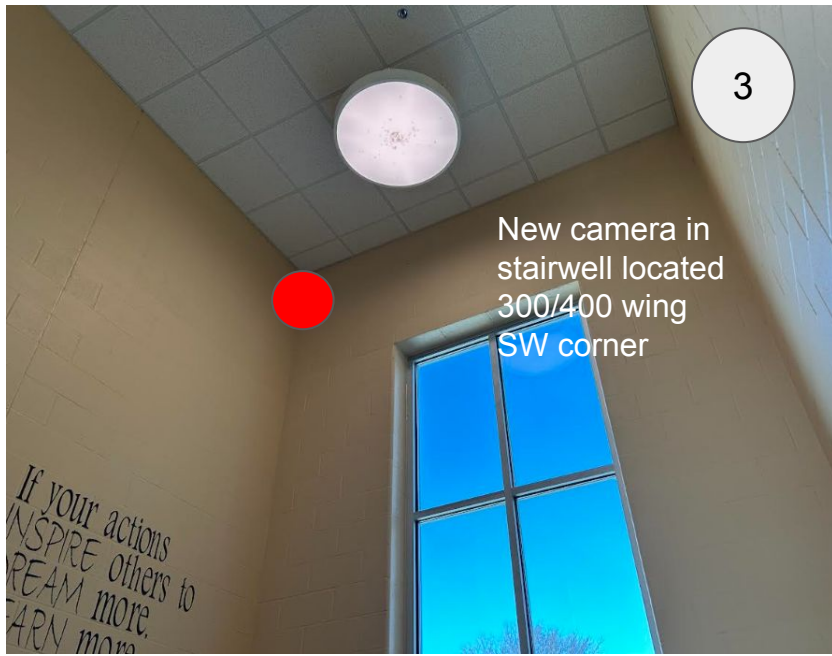
Roof repair  
above gym



2

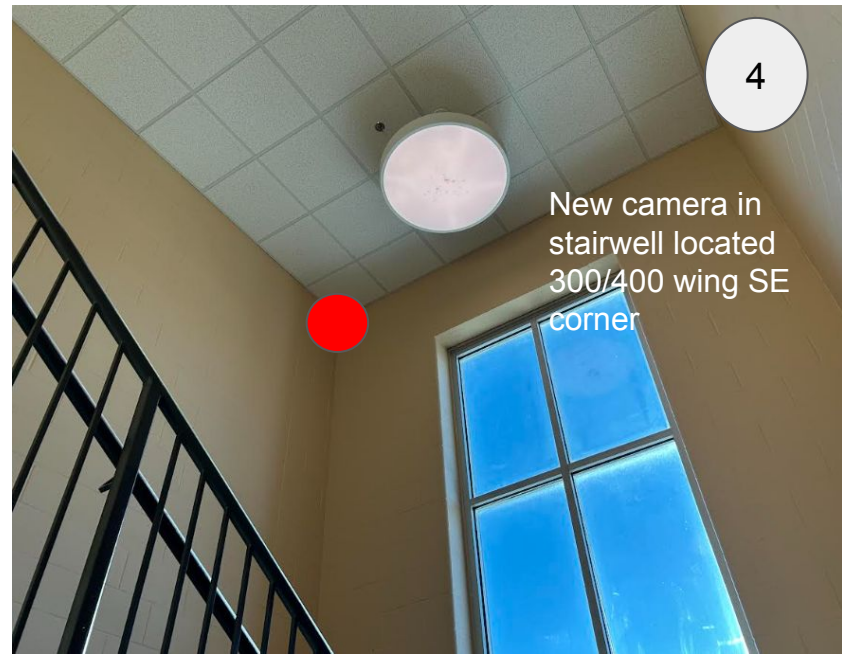
New epoxy  
flooring in 100,  
200, main  
hallway  
restrooms





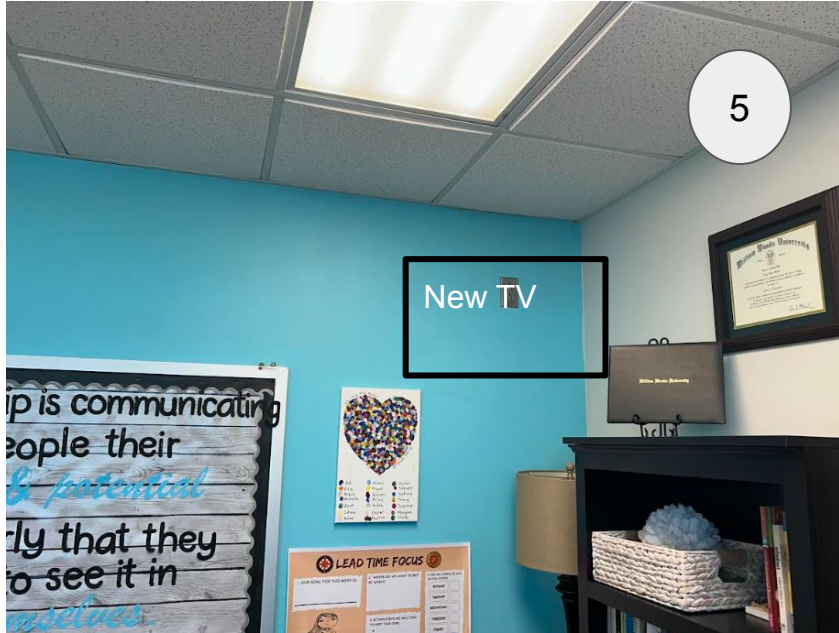
New camera in  
stairwell located  
300/400 wing  
SW corner

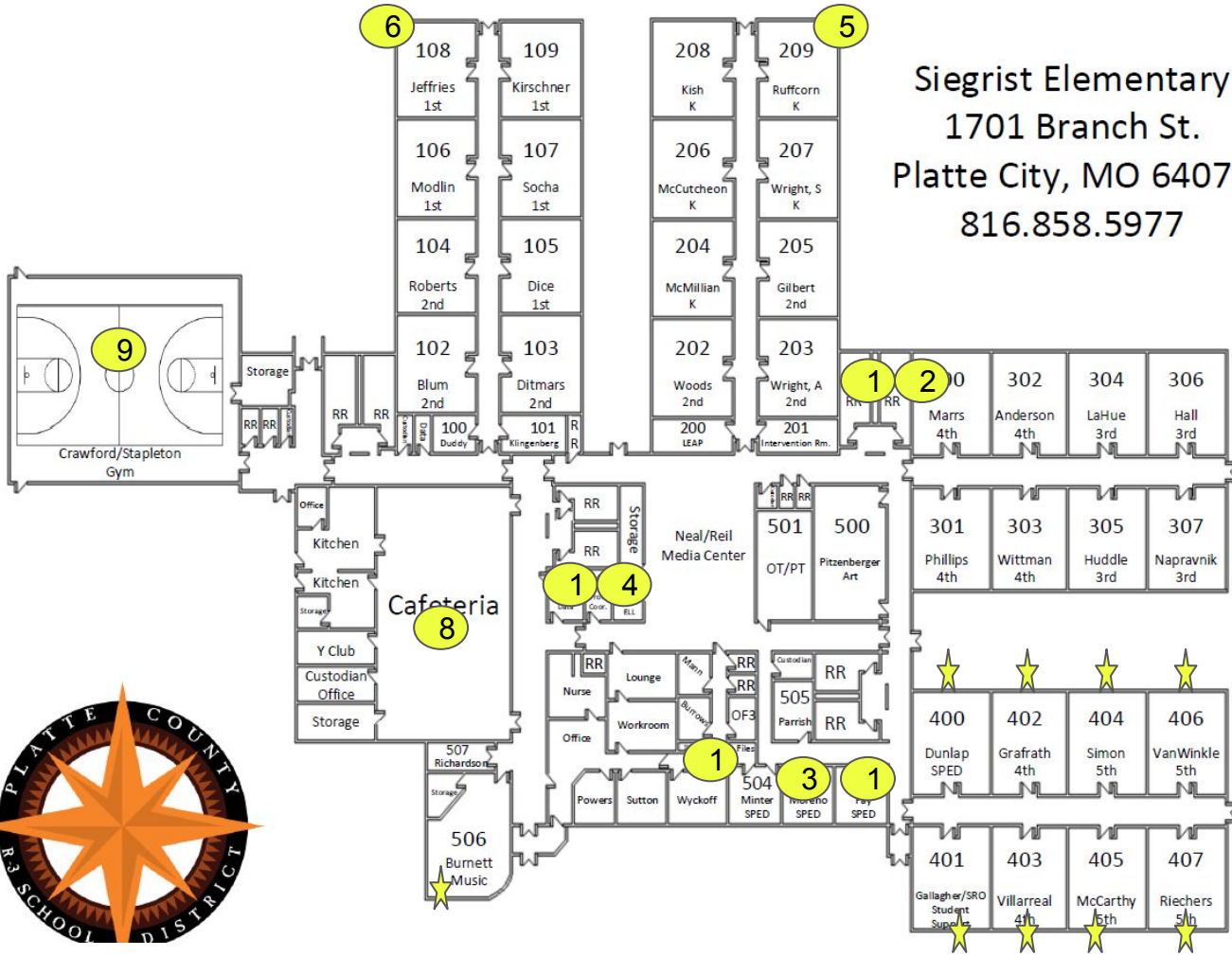
3



New camera in  
stairwell located  
300/400 wing SE  
corner

4





**Siegrist Elementary**  
 1701 Branch St.  
 Platte City, MO 64079  
 816.858.5977

**Additional Capital Outlay**

\* New carpet and furniture refresh for 400 wing classrooms and music room

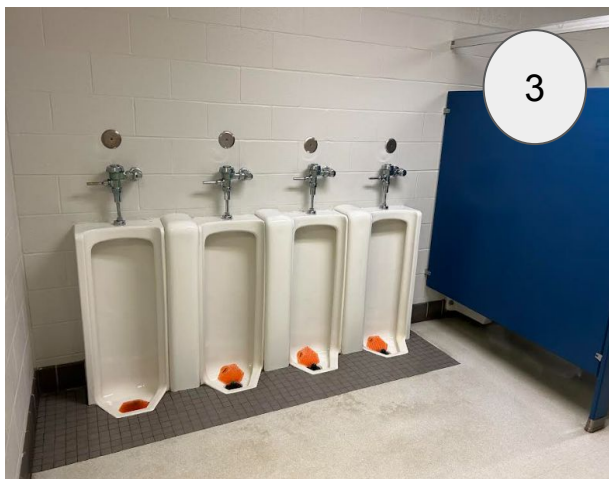
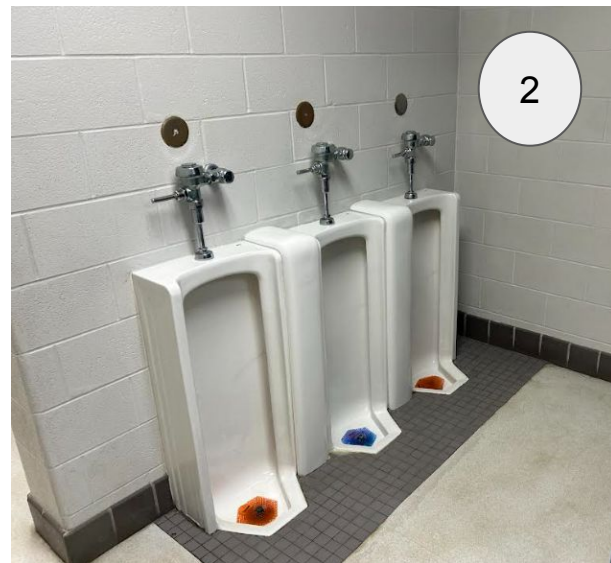
\* New cafeteria tables

\* Gym projector and sound system upgrade

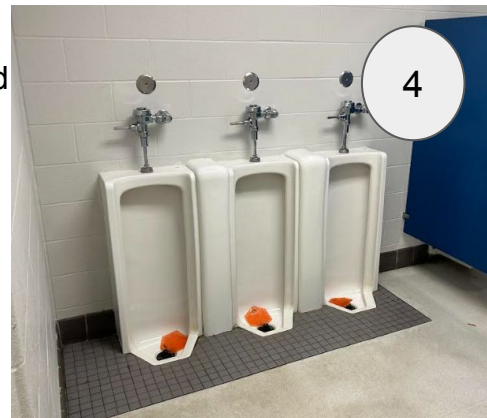




New epoxy flooring in five restrooms

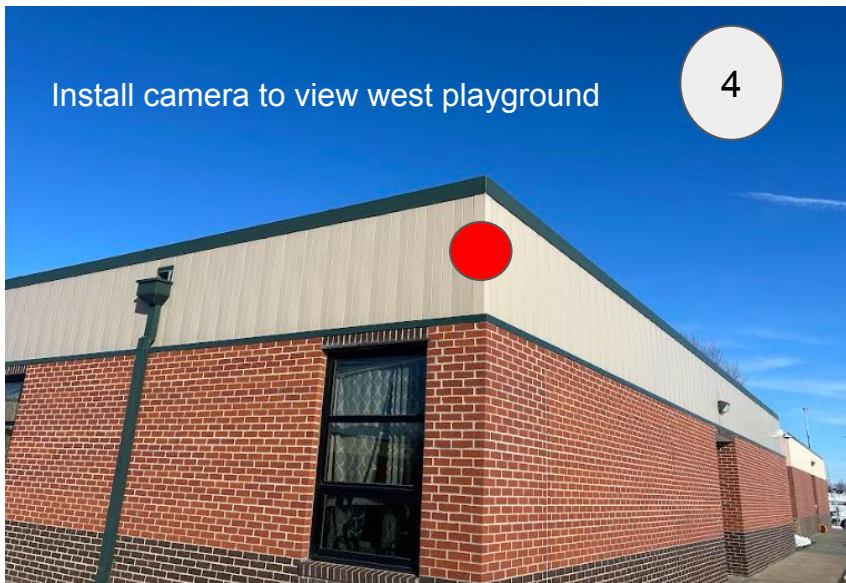


Replace floor urinals with wall mounted urinals



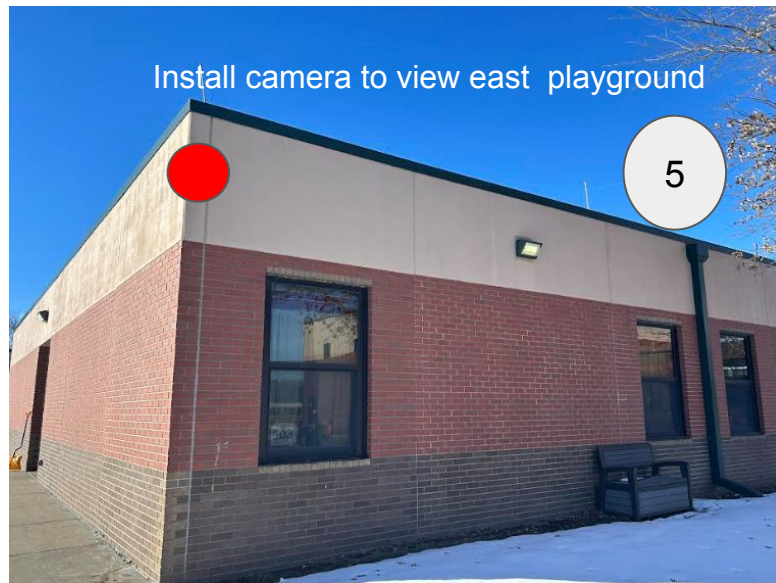
Install camera to view west playground

4



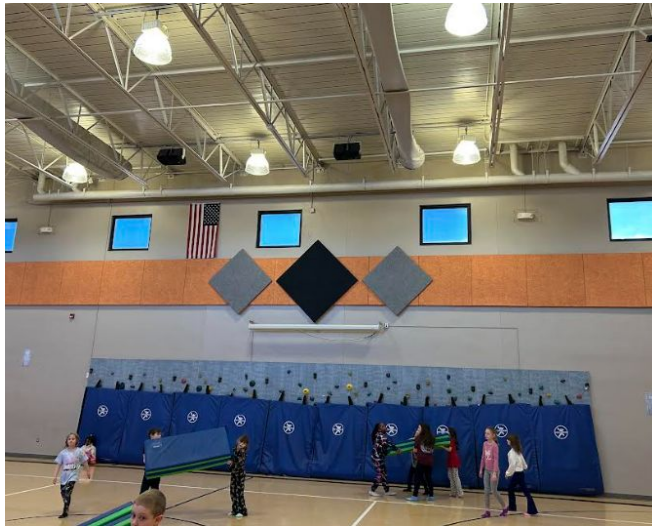
Install camera to view east playground

5



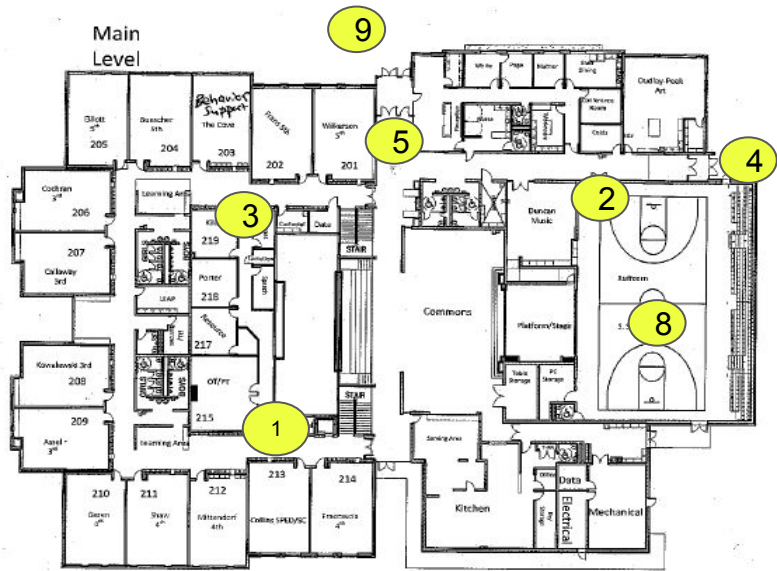


New scoreboard



Gym projector





6

26 classrooms repaint whiteboard wall to room color and install 4' x 12' whiteboard

7

Install sidewalk to connect upper and lower playgrounds

8

Install gym projector

9

Repaint car rider area

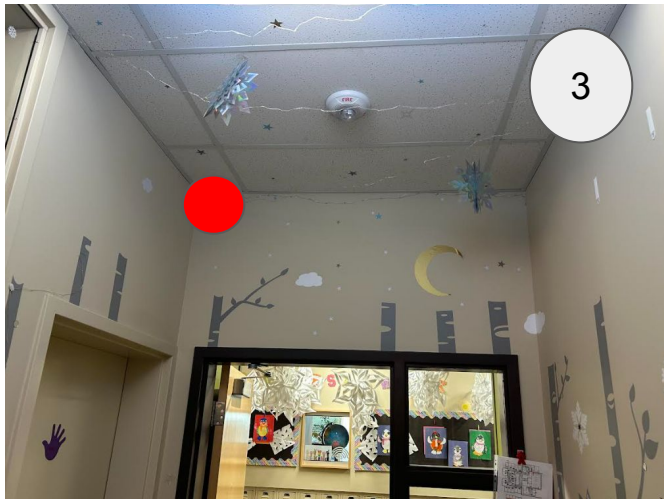
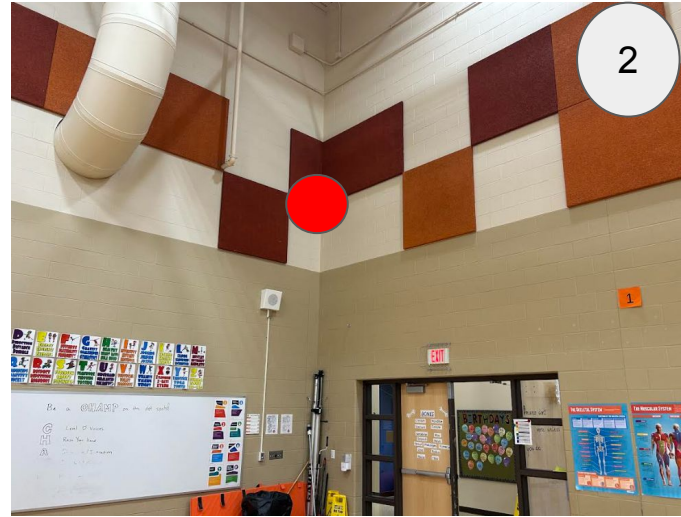


Compass Elementary K-5  
401 Kentucky Ave.  
Platte City, MO 64079  
(816) 858-0172

Staff Room Locations

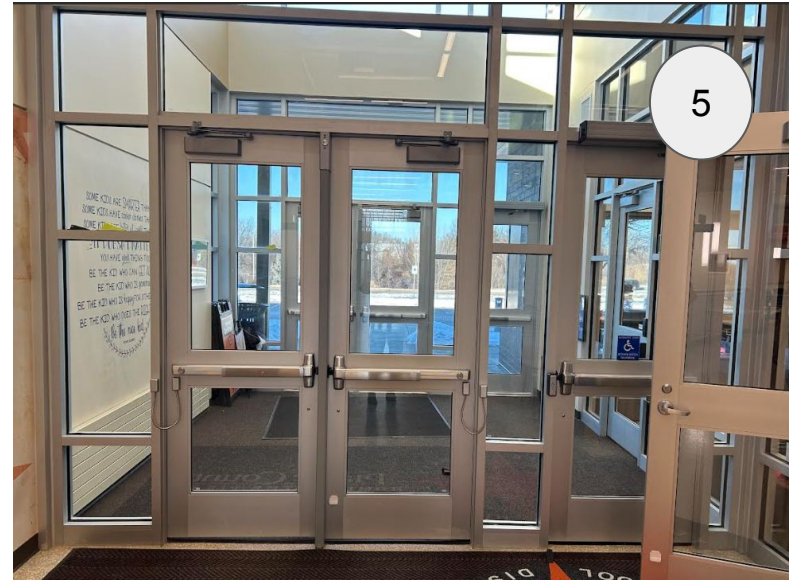






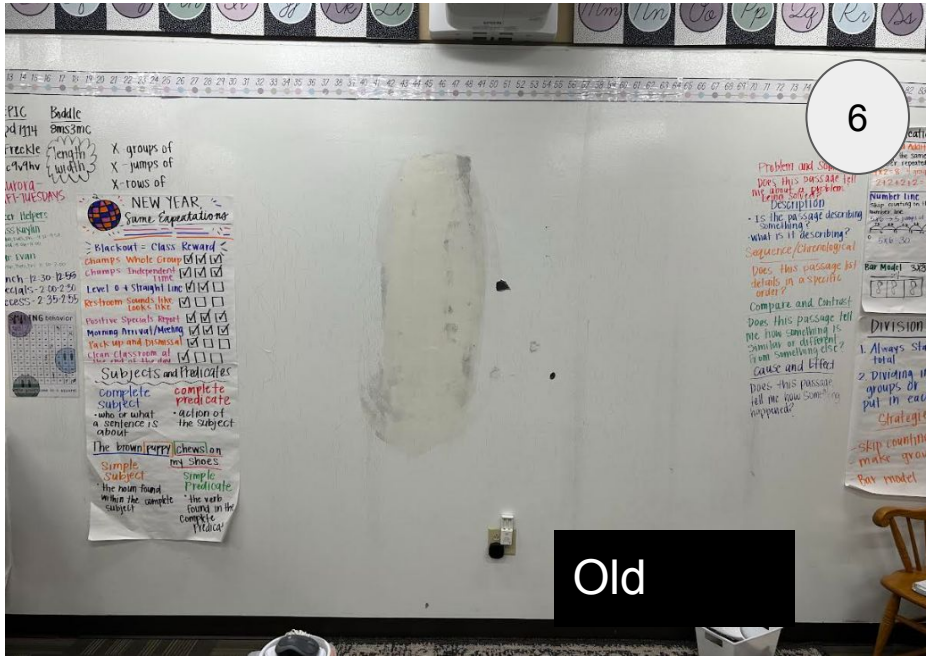
Additional security cameras





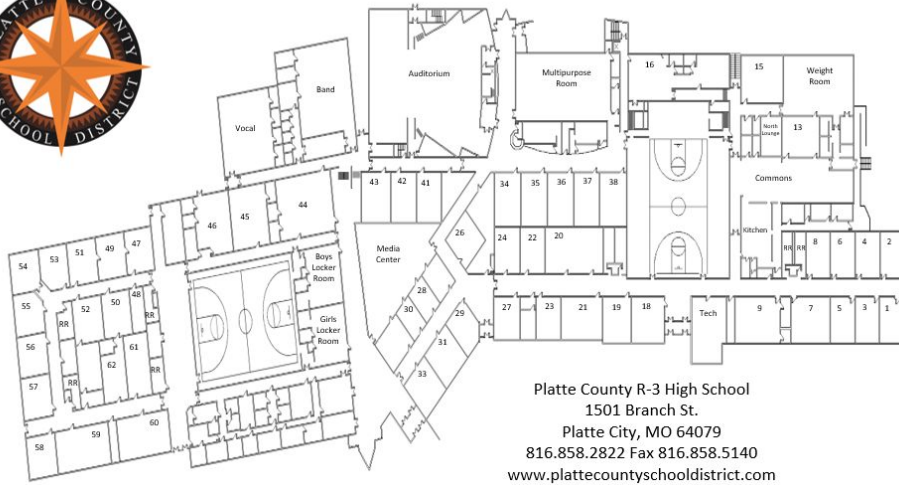
Window signage for security

# Repaint whiteboard walls with paint to match classroom and install 4'x12' whiteboards



Install sidewalk to connect upper and lower playgrounds

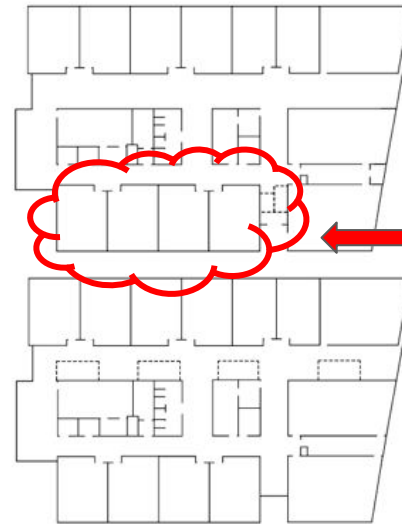




Platte County R-3 High School  
 1501 Branch St.  
 Platte City, MO 64079  
 816.858.2822 Fax 816.858.5140  
[www.plattecountyschooldistrict.com](http://www.plattecountyschooldistrict.com)

## PCHS / Activities / Athletics Capital Outlay

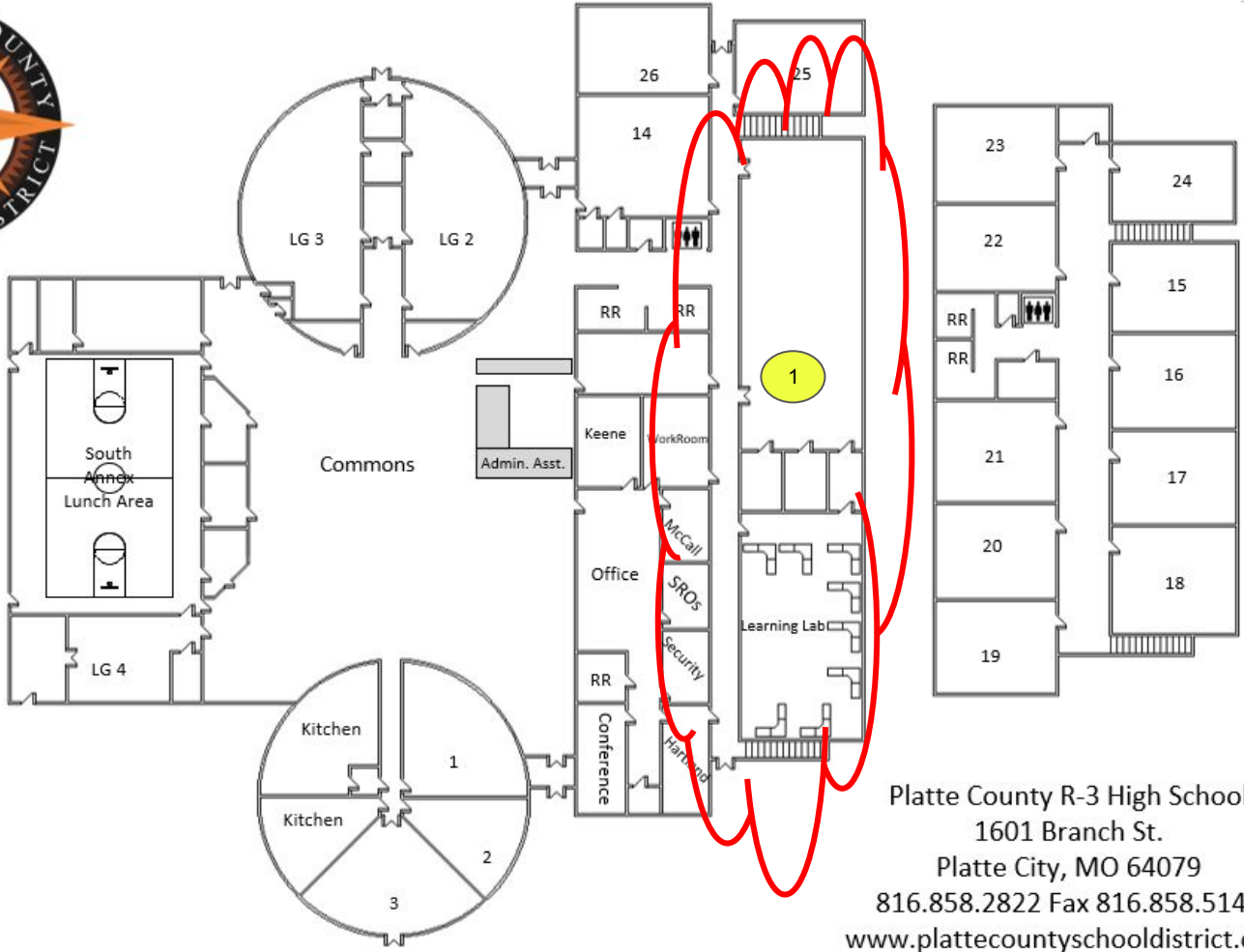
- \* New wrestling mat
- \* Visitors bleachers Pirate stadium
- \* New PCHS Band uniforms
- \* PCHS furniture  
*(office desks / chairs / reception area desks)*



Convert  
to two  
Science  
labs



Platte County R-3 High School  
 1601 Branch St.  
 Platte City, MO 64079  
 816.858.2822 Fax 816.858.5140  
[www.plattecountyschooldistrict.com](http://www.plattecountyschooldistrict.com)

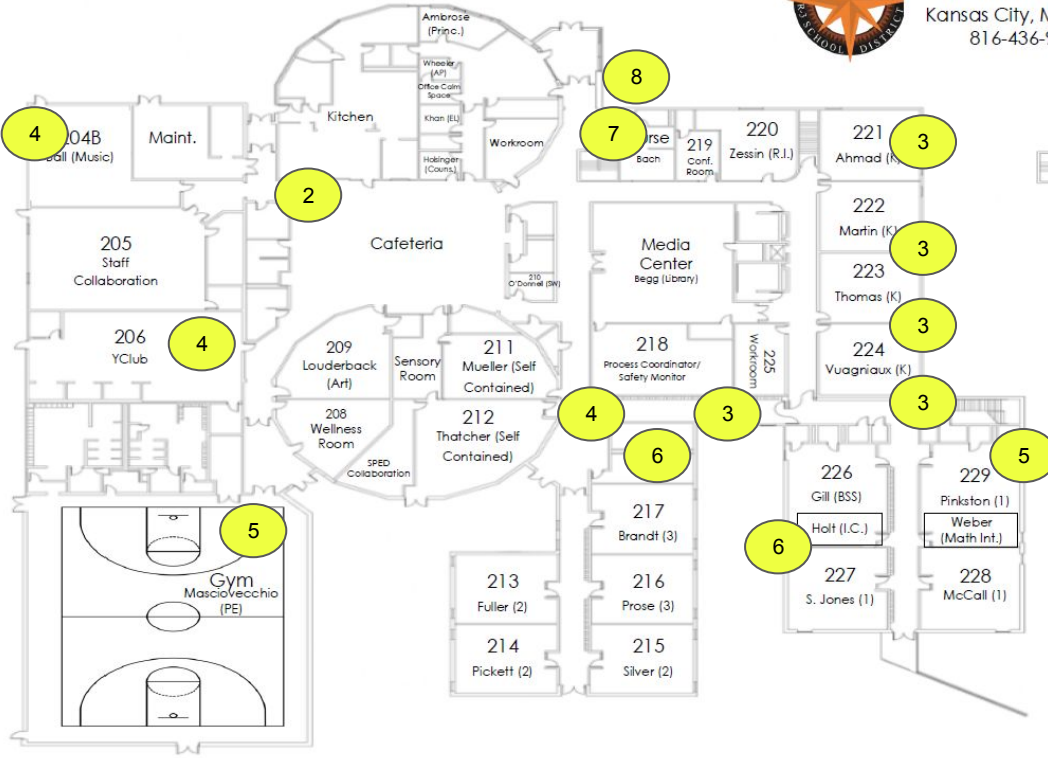


Paxton remodel phase two that will provide the renovation to large group one for vocal music.

Platte County R-3 High School  
1601 Branch St.  
Platte City, MO 64079  
816.858.2822 Fax 816.858.5140  
[www.plattecountyschooldistrict.com](http://www.plattecountyschooldistrict.com)



Barry Elementary  
 2001 NW 87th Terrace  
 Kansas City, MO 64154  
 816-436-9623



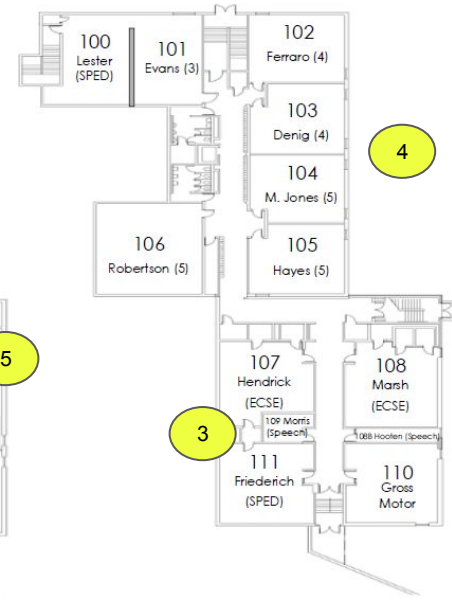
3 Cubbies added to rooms 221, 222, 223, 224, 218, 107

4 Carpet in music room, 218, collaboration room closet

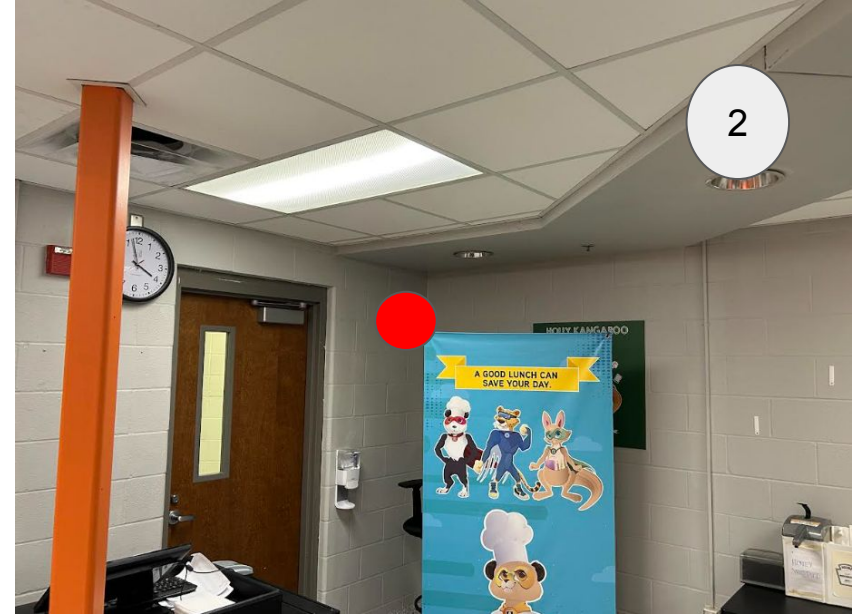
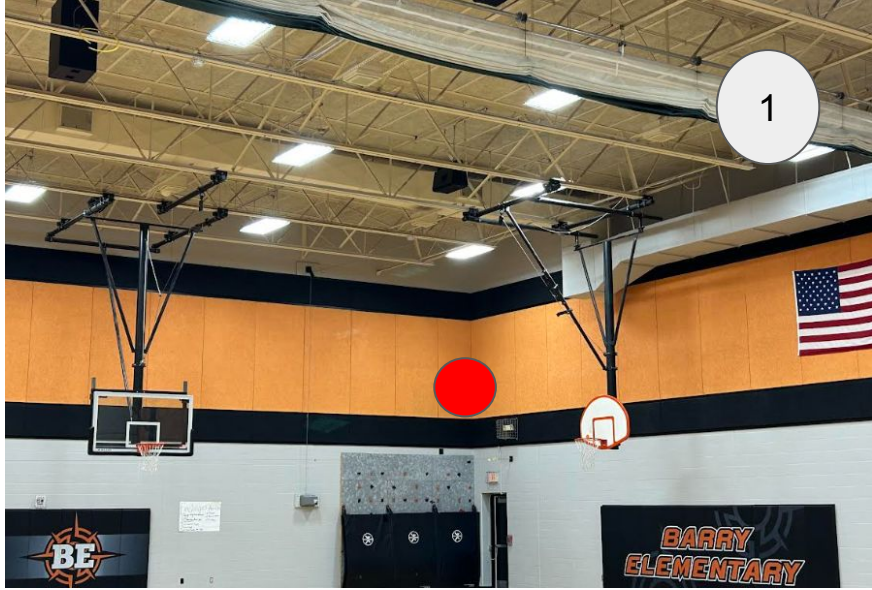
5 Paint car rider entry and Y-Club hallway

7 Card reader for office door

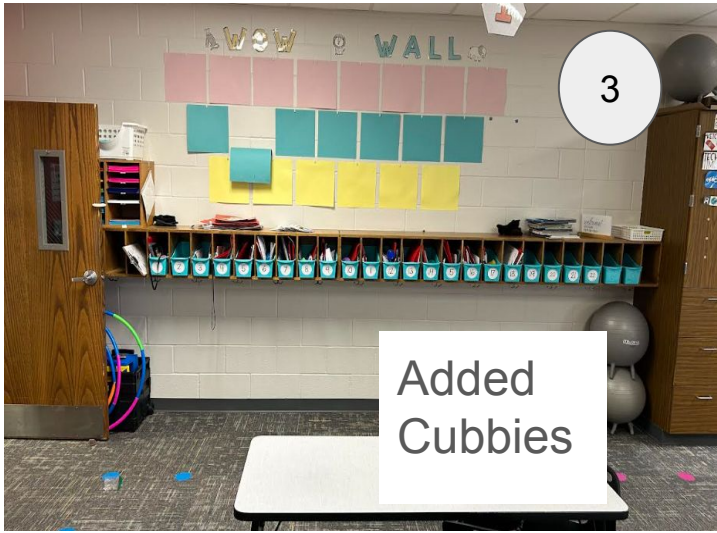
6 Furniture for room 218 & 226







Added security cameras



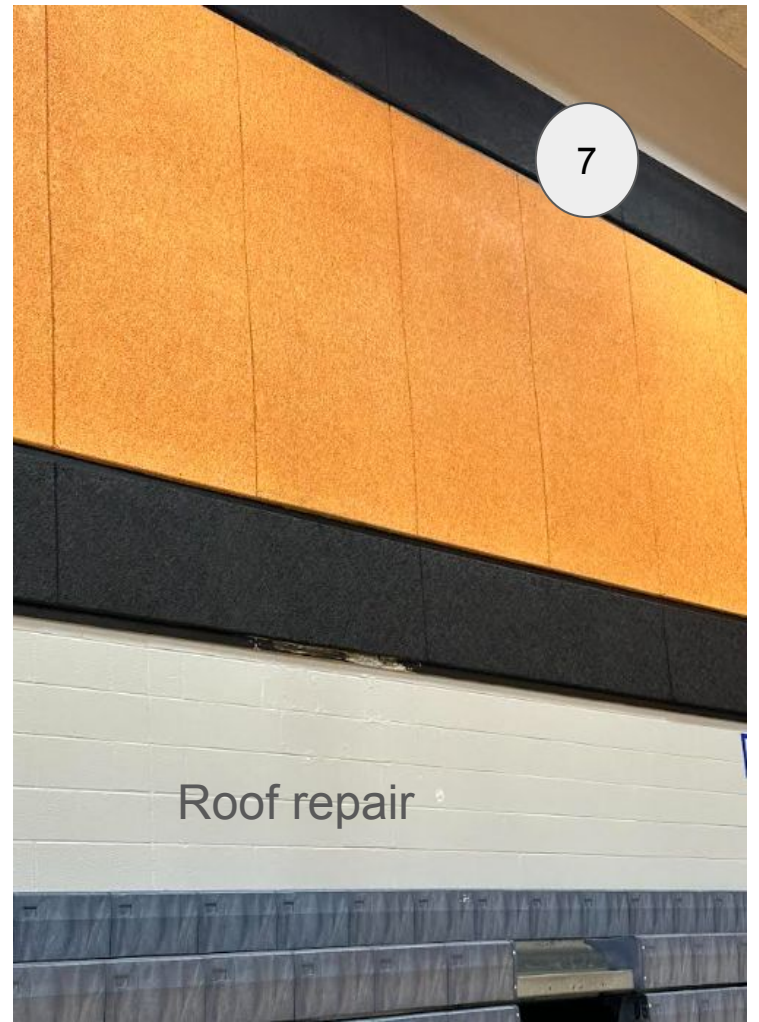
Added  
Cubbies



New Carpet



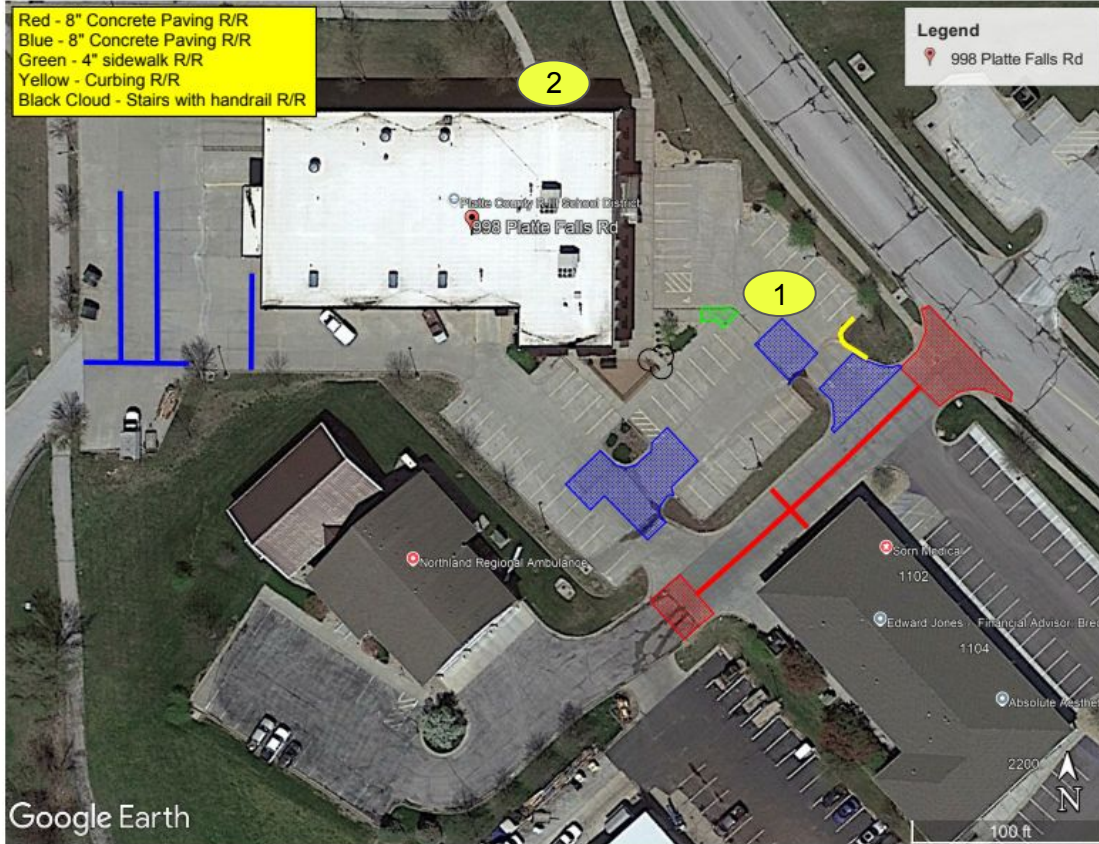
Paint





8

Window  
replacement

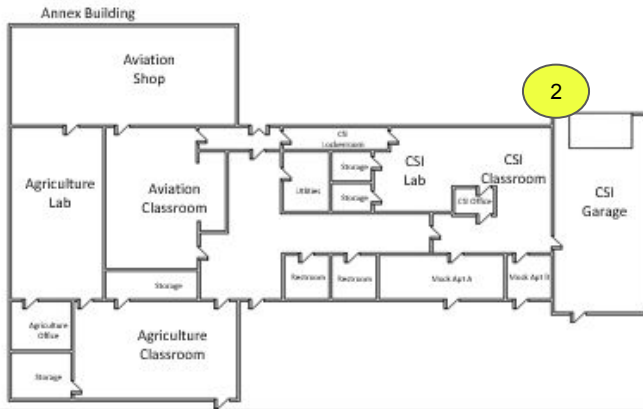
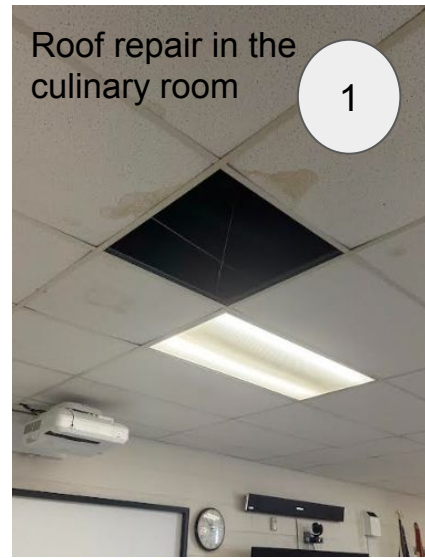
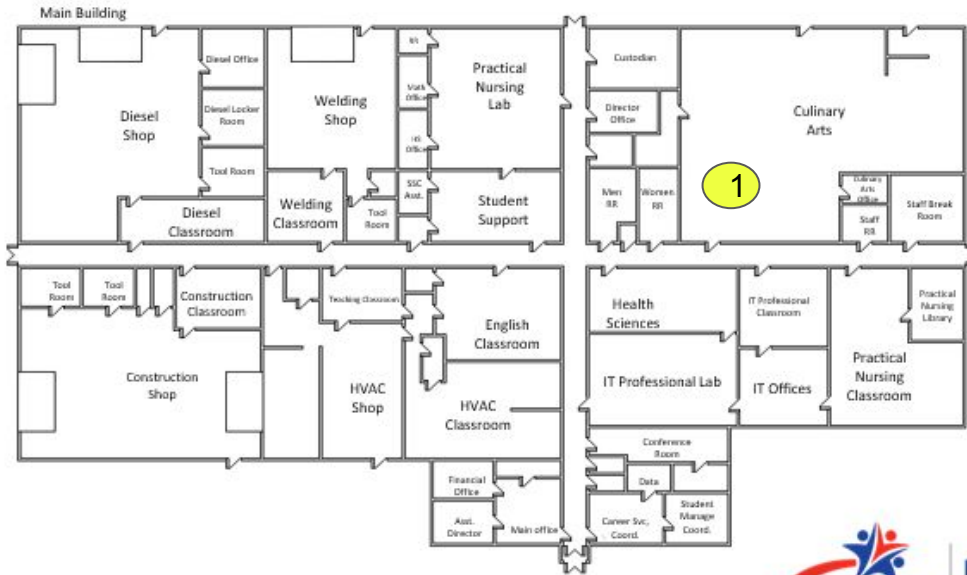


1 Parking lot repairs at the DEC that would also extend to the shared drive with NRAD.

2 Doorbell camera transportation office

### Additional District Wide Capital Outlay

- \* 22' 4' flat deck on front tilt trailer (To haul our scissor lift and skid steer)
- \* One ton general maintenance truck



**NORTHLAND  
CAREER CENTER**  
College Ready | Career Ready | Life Ready

Northland Career Center  
1801 Branch St.  
Platte City, MO 64079  
816.858.5505  
816.858.3278(Fax)



# 5-Year Plan Summary

Facility Category	FY26	FY27	FY28	FY29	FY30	Totals
MEP	\$85,000	\$72,000	\$72,000	\$72,000	\$360,000	\$661,000
Parking Lots	\$122,000	\$34,000	\$66,000	\$67,000	\$20,000	\$309,000
Building Envelope	\$18,000	\$27,000	\$27,000	\$27,000	\$27,000	\$126,000
Roofs	\$175,000	\$200,000	\$1,650,000	\$920,000	\$240,000	\$3,185,000
Playgrounds	\$10,000	\$810,000	\$80,000	\$20,000	\$85,000	\$1,005,000
Windows/Door	\$15,000	\$20,000	\$20,000	\$10,000	\$20,000	\$85,000
Building Interiors	\$1,192,663	\$156,000	\$142,000	\$1,338,000	\$66,000	\$2,894,663
Keying	\$5,000	\$5,000	\$5,000	\$5,000	\$5,000	\$25,000
Safety/Security	\$53,000	\$60,000	\$60,000	\$60,000	\$60,000	\$293,000
Food Service	\$20,000	\$35,000	\$35,000	\$35,000	\$35,000	\$160,000
BAS System	\$0	\$20,000	\$20,000	\$20,000	\$20,000	\$80,000
Vehicles / Buses	\$350,000	\$350,000	\$350,000	\$350,000	\$350,000	\$1,750,000
Equipment	\$17,750	\$35,000	\$55,000	\$50,000	\$50,000	\$207,750
Furniture	\$305,075	\$163,000	\$162,000	\$208,000	\$114,000	\$952,075
Grounds	\$30,300	\$85,000	\$20,000	\$20,000	\$20,000	\$175,300
Extra Curricular	\$856,700	\$200,000	\$1,000,000	\$1,000,000	\$20,000	\$3,076,700
Gym Floors	\$15,000	\$25,000	\$25,000	\$25,000	\$25,000	\$115,000
Technology	\$400,000.00	\$790,000	\$815,000	\$790,000	\$790,000	\$3,585,000
<b>Totals</b>	<b>\$3,670,488</b>	<b>\$3,087,000</b>	<b>\$4,604,000</b>	<b>\$5,017,000</b>	<b>\$2,307,000</b>	<b>\$18,685,488</b>



# FY27 Projected Major Projects

Facility Category	FY27
MEP	\$72,000
Parking Lots	\$34,000
Building Envelope	\$27,000
Roofs	\$200,000
Playgrounds	\$810,000
Windows/Door	\$20,000
Building Interiors	\$156,000
Keying	\$5,000
Safety/Security	\$60,000
Food Service	\$35,000
BAS System	\$20,000
Vehicles / Buses	\$350,000
Equipment	\$35,000
Furniture	\$163,000
Grounds	\$85,000
Extra Curricular	\$200,000
Gym Floors	\$25,000
Technology	\$790,000
<b>Totals</b>	<b>\$3,087,000</b>

## FY27 Major Projects

- PCMS/NCC Roof Repairs (Roofs)
- Barry Playground Improvements (Playgrounds)
- Siegrist/PCMS Carpet Replacement (Building Interiors)
- Siegrist/PCMS Furniture Refresh (Furniture)
- Devices (Technology)





# FY28 Projected Major Projects

Facility Category	FY28
MEP	\$72,000
Parking Lots	\$66,000
Building Envelope	\$27,000
Roofs	\$1,650,000
Playgrounds	\$80,000
Windows/Door	\$20,000
Building Interiors	\$142,000
Keying	\$5,000
Safety/Security	\$60,000
Food Service	\$35,000
BAS System	\$20,000
Vehicles / Buses	\$350,000
Equipment	\$55,000
Furniture	\$162,000
Grounds	\$20,000
Extra Curricular	\$1,000,000
Gym Floors	\$25,000
Technology	\$815,000
<b>Totals</b>	<b>\$4,604,000</b>

## FY28 Major Projects

- Siegrist/NCC Roof Replacement (Roofs)
- Pathfinder/Compass Carpet Replacement (Building Interiors)
- Pathfinder/Compass Furniture Refresh (Furniture)
- Pirate Stadium Turf Replacement 2 fiscal years (Extra Curricular)
- Devices (Technology)



# FY29 Projected Major Projects

Facility Category	FY29
MEP	\$72,000
Parking Lots	\$67,000
Building Envelope	\$27,000
Roofs	\$920,000
Playgrounds	\$20,000
Windows/Door	\$10,000
Building Interiors	\$1,338,000
Keying	\$5,000
Safety/Security	\$60,000
Food Service	\$35,000
BAS System	\$20,000
Vehicles / Buses	\$350,000
Equipment	\$50,000
Furniture	\$208,000
Grounds	\$20,000
Extra Curricular	\$1,000,000
Gym Floors	\$25,000
Technology	\$790,000
<b>Totals</b>	<b>\$5,017,000</b>

## FY29 Major Projects

- PCMS Roof Replacement (Roofs)
- NCC Renovation (Building Interiors)
- Pathfinder/Compass Furniture Refresh (Furniture)
- Pirate Stadium Turf Replacement 2 *fiscal years* (Extra Curricular)
- Devices (Technology)



# FY30 Projected Major Projects

Facility Category	FY30
MEP	\$360,000
Parking Lots	\$20,000
Building Envelope	\$27,000
Roofs	\$240,000
Playgrounds	\$85,000
Windows/Door	\$20,000
Building Interiors	\$66,000
Keying	\$5,000
Safety/Security	\$60,000
Food Service	\$35,000
BAS System	\$20,000
Vehicles / Buses	\$350,000
Equipment	\$50,000
Furniture	\$114,000
Grounds	\$20,000
Extra Curricular	\$20,000
Gym Floors	\$25,000
Technology	\$790,000
<b>Totals</b>	<b>\$2,307,000</b>

## FY30 Major Projects

- NCC/Siegrist/PCMS HVAC Replacement (MEP)
- PCMS Roof Repairs (Roofs)
- Pathfinder/Compass Furniture Refresh (Furniture)
- Devices (Technology)



# Questions

