

COMPREHENSIVE SCHOOL IMPROVEMENT PLAN UPDATE

2024-25 Elementary Schools

May 15, 2025



Focus Areas/Goals 2024-25

Teaching and Learning Strategic Anchors

High Performing Teams (PLCs)

100% of Building Leadership Teams will utilize a data driven process to monitor the BSIP in every meeting.

2.1

Behavior Management Systems

Decrease the number of referrals out of the classroom by 10% each month comparing 23-24 to 24-25.

2.2

Guaranteed and Viable Curriculum

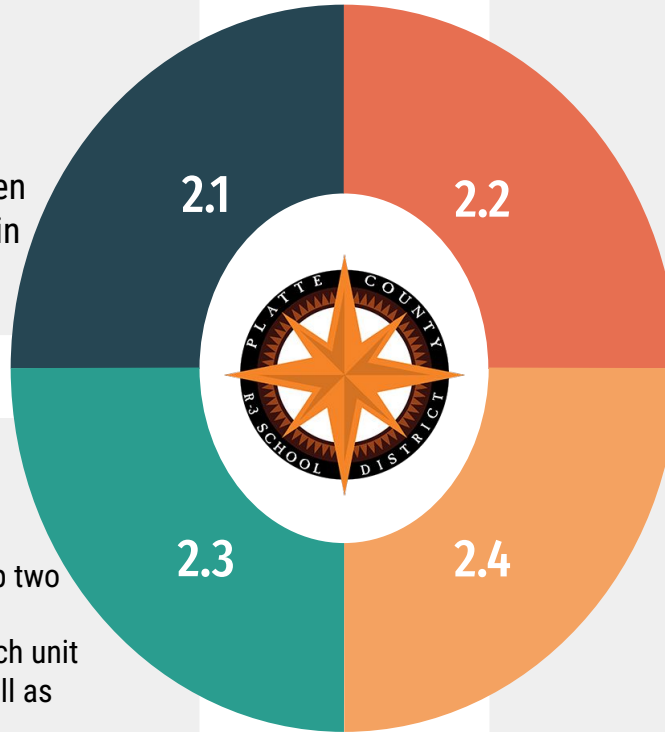
70% of students will be in the top two categories when looking at EOY Benchmark at secondary and each unit assessment in elementary as well as state assessment.

2.3

Relevant and Engaging Instruction

More than 90% of our students will be here 90% of time of scheduled enrollment.

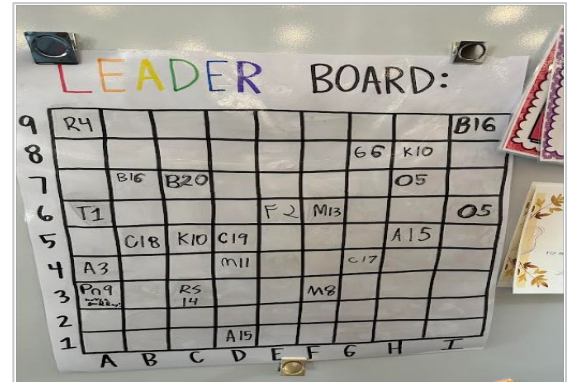
2.4



Supporting Data

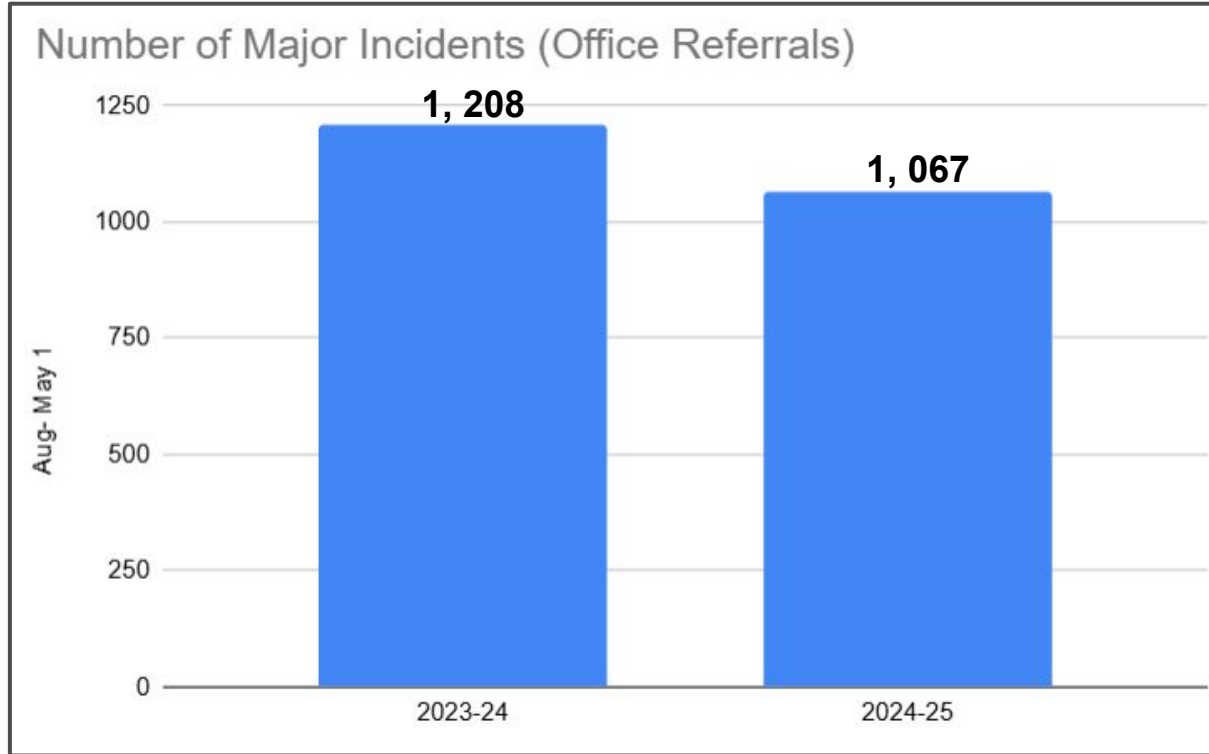
Goal 1: Behavior Management

- Elementary buildings successfully achieved a **minimum 10% overall reduction** in major behavior referrals
- Teachers engaged in **multiple professional learning sessions** through the Safe and Civil Schools program
- Each school participated in **additional targeted professional development** to support behavior strategies
- **Implementation progress is being monitored** through structured walk-through data
- A **Behavior Support Specialist** has been established in every building to oversee and run Behavior Support Plans



Supporting Data Behavior

- Behavior Results: Office Managed Behavior



- Both graphs represent all 4 Elementary Schools
- Left = 2023-24
- Right = 2024-25
- First Day of School through May 1st
- Represents an overall 12% reduction in Office-Managed Behavior Referrals



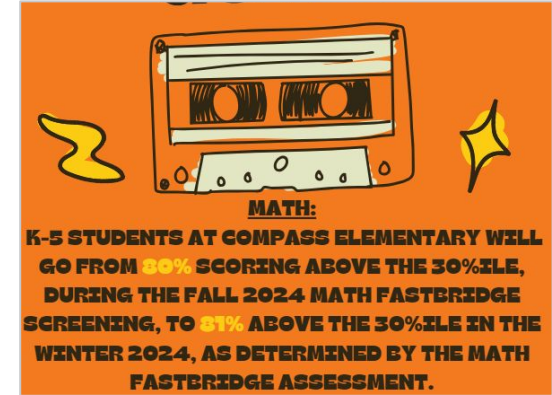
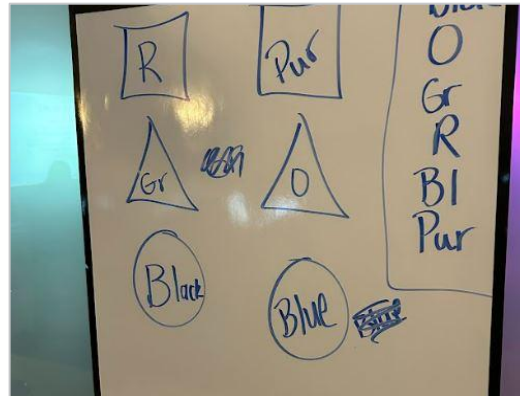
Supporting Data

Goal 2: Guaranteed and Viable Curriculum

- Teachers engaged in multiple professional learning sessions facilitated by KCRPDC specific to number sense in alignment with a book study
- Classroom teachers engaged in quarterly sub release days for professional learning and collaborative planning in math led by each building's instructional coach
- Teams engaged in weekly collaboration around students' mastery of grade level standards in math

Whiteboard showing math problems for four students:

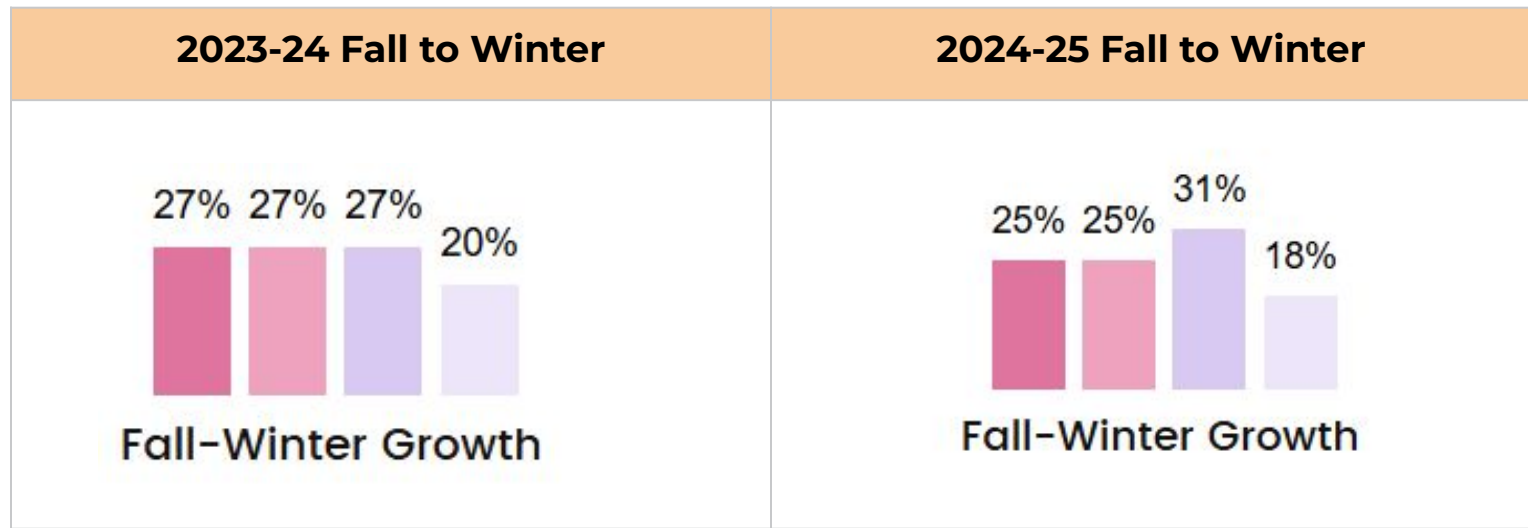
- Henry**
144
 36×4
 $3 \times 4 = 12$
 $12 \times 10 = 120$
 $4 \times 6 = 24$
 $120 + 24 = 144$
- Gabe**
144
 36×4
 $36 \times 2 = 72$
 $(36 \times 36) \div 72$
 $(36 \times 2) + (36 \times 2) = 72 + 72 = 144$
- Rory**
144
 36×4
 $6 \times 4 = 24$
 $4 \times 30 = 120$
 $120 + 24 = 144$
- Dyanon**
144
 $30 \times 4 = 120$
 $4 \times 6 = 24$
 $24 + 120 = 144$
 $100 + 44 = 144$



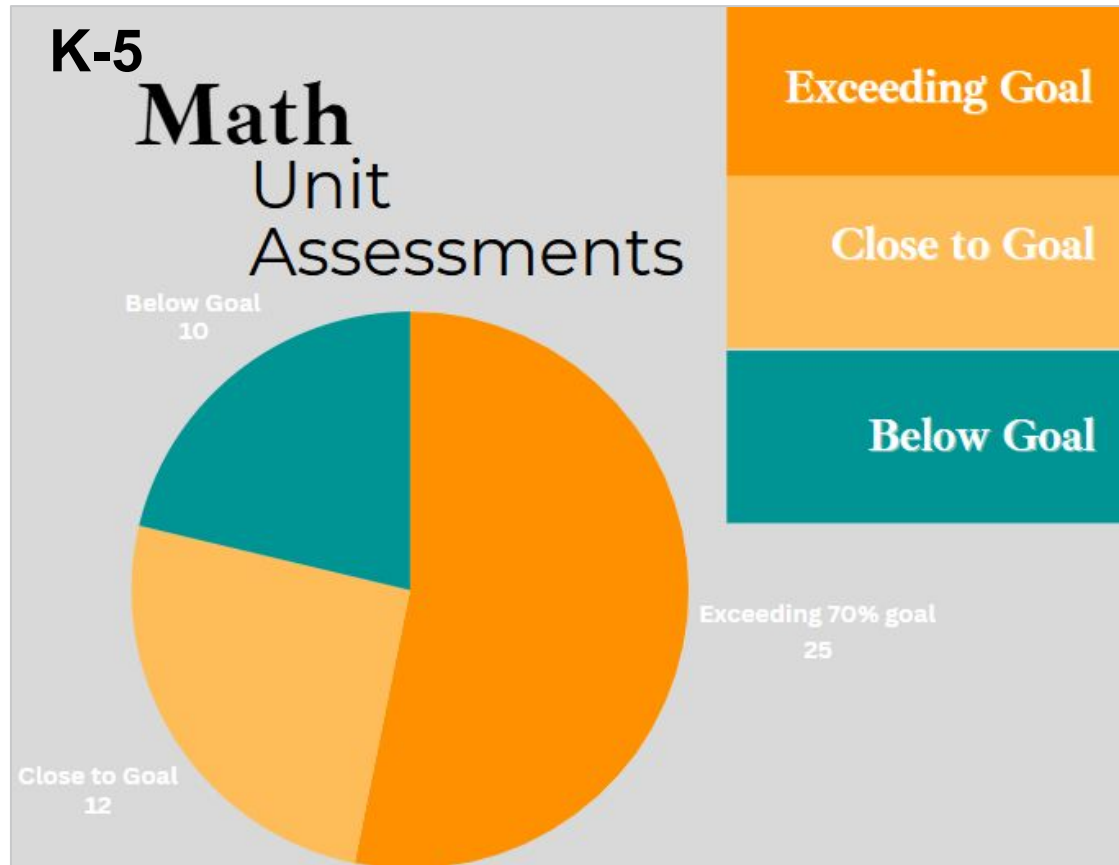
Supporting Data Academic Results

- Fastbridge: Math Assessment Results

Student Median Growth %ile:



Supporting Data Academic Results



Out of 47 Math unit assessments:

25 (**53%**) of those assessments the average scores exceeded 70% or better.

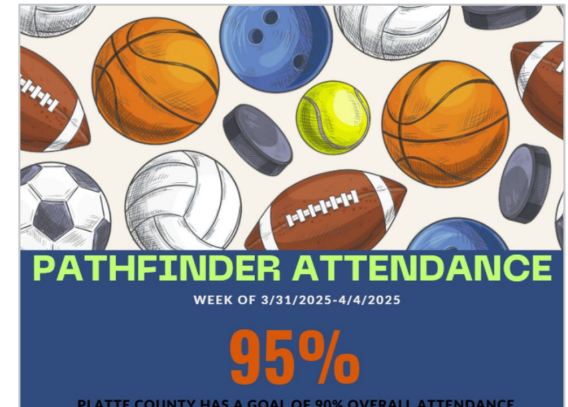
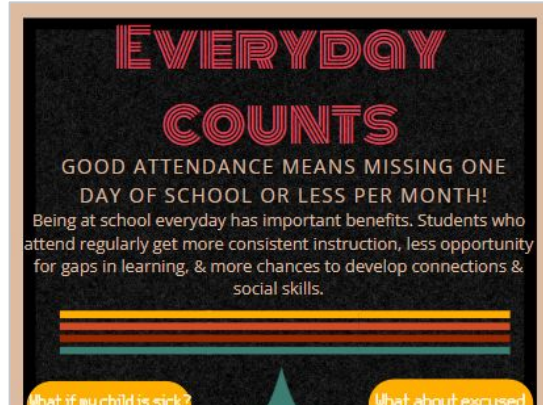
12 of those assessments were close (10% points)



Supporting Data

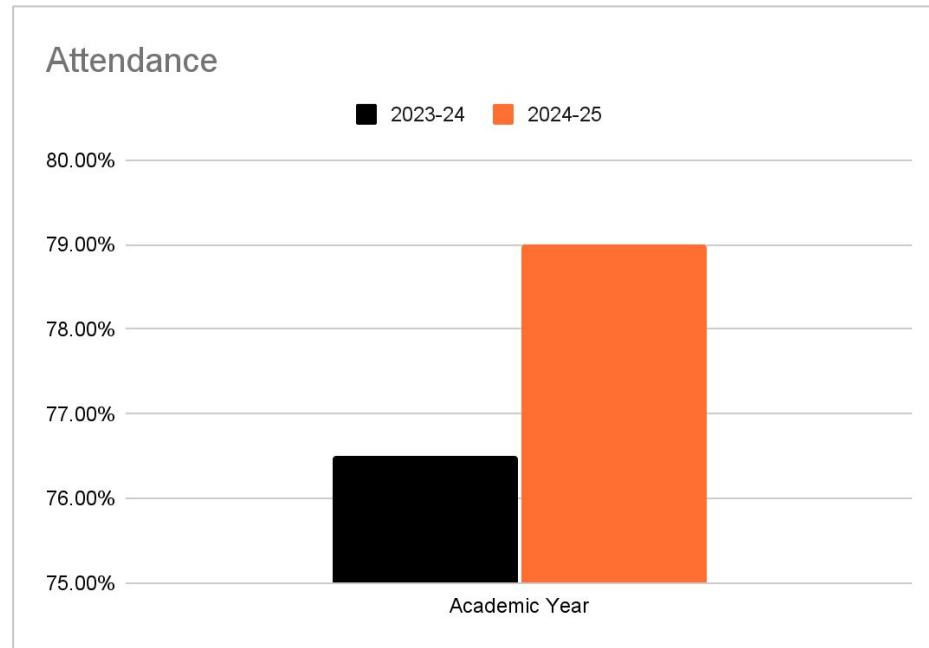
Goal 3: Attendance

- Emphasize student attendance in all communications with families to reinforce its importance
- Collaborate with families to identify and implement strategies that support improved school attendance
- Promote greater awareness of the academic and social benefits of consistent school attendance
- Streamlined communication processes to ensure parents receive timely and accurate updates on student attendance



Supporting Data Attendance

- Attendance Results: We are currently at 79% of students reaching the 90% goal. We have seen a 2.5% increase in students that have met our 90% goal by this time in the year from 2023-24 to 2024-25.



Planned Action Steps 2025-26

- Each building BSIP will have goals in the following improvement areas related to academic achievement:
 - Academic Achievement *goals in all tested contents* (ELA, Math, Science)
 - Academic Achievement *goals focused on both status* (students scoring proficient and advanced) and *growth* (advancement from one proficiency band to the next)
 - Academic Achievement *goals for the total student population and students with disabilities* (Individualized Education Plans)
 - Academic Achievement *goals for other student group populations* aligned to building demographics - (i.e. - English Learners and Title)



Planned Action Steps 2025-26

- As a Elementary Team we will focus on the following improvement goals:
 - *Professional Learning Communities (PLC)*
 - Data Driven Decision Making
 - Enhanced **PLC Practices** driven by data
 - Alignment to High Reliability Schools (HRS) Framework Levels 1-3
 - *Student Academic Achievement*
 - **70% Proficiency or better** on district and state assessments (MSIP6)
 - **95% or greater Participation Rate** on all district and state assessments (MSIP6)
 - **Focused growth for student groups:** (MSIP6)
 - All buildings must develop a specific goal for the improvement of academic student achievement for students with disabilities
 - All buildings can focus on an additional student group based on current student performance data
 - **90/90 Attendance** (MSIP6)
 - *Behavior Management*
 - **10% Reduction** in Office-Managed Discipline Referrals



Celebrations

- **Barry Elementary**
 - Attendance awareness is up and has increased among staff, students, and families
 - Addition of a full-day Pre-K classroom
 - Start up of WATCH D.O.G.S. program for 2025-26
 - Staff and Student COWBELL celebrations continue
- **Compass Elementary School**
 - Met our SMART Goal in math for the winter
 - Both administrators were duct-taped by each student to the wall
 - PLC focus and increase in academic achievement and student focus
 - Kindergarten Academy - successful first year
 - Staff Firefly Awards



Celebrations

- **Pathfinder Elementary School**
 - Behavior Support Specialist has been instrumental in supporting behavioral needs of students
 - Student Success Team revisions support a collaborative approach
 - Focus on positive culture has been well-received & contributes to all other BSIP goals
- **Siegrist Elementary School**
 - High Five Fridays (Got Character, WATCH D.O.G.S., PCHS groups)
 - Action Team Alignment to BSIP with goals and actions identified
 - Academic Improvement Teams (AITs) focused on the four questions of a PLC, increased use of Common Formative Assessments (CFAs)
 - Student Leadership Teams
 - Staff Buffalo Awards



Questions? Great Team!

