

# Platte County R-3 School District Community Survey Overview

December, 2024



# BACKGROUND & METHODOLOGY

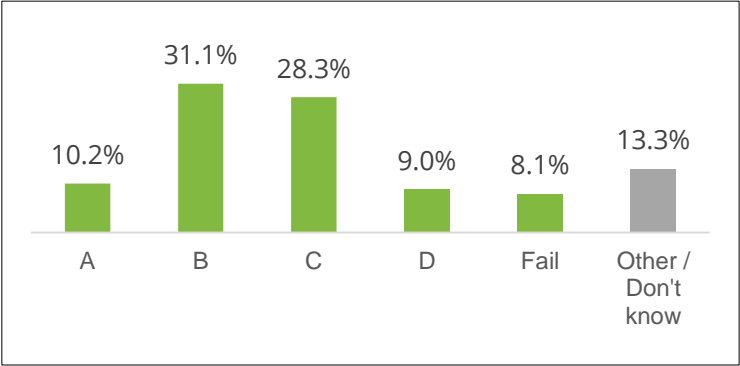
- Phone survey conducted November 2024
- Results weighted by gender
- Online survey currently underway

# GRADING MISSOURI/DISTRICT SCHOOLS

## State of Missouri

A-B  
**41.3%**

D-Fail  
**17.1%**



## Platte County R-3 School District

A-B  
**67.4%**

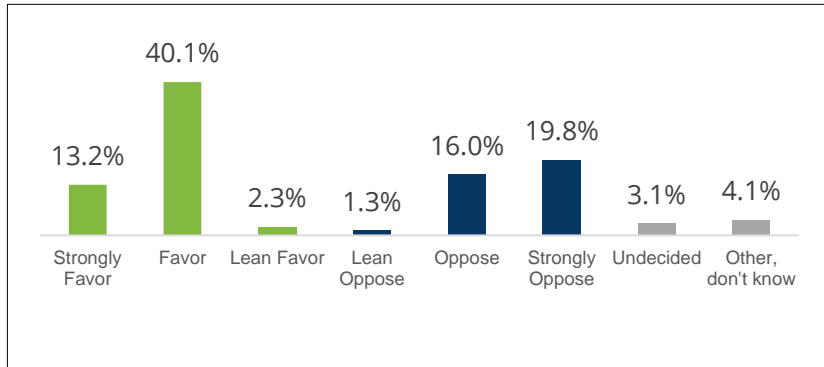
D-Fail  
**10.5%**



# POSSIBLE DISTRICT BOND PROPOSAL

## Initial Question

Total Favor **55.6%** Total Oppose **37.2%**



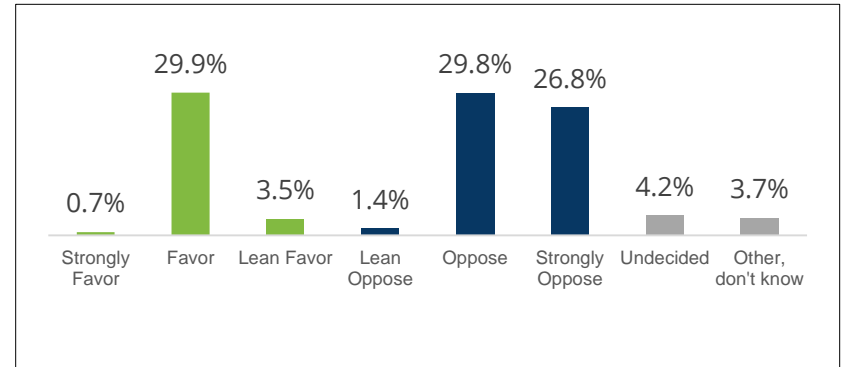
While no decision has been made, Platte County School District is considering asking voters to approve a \$63.87 million bond proposal for completing the second phase of Platte County high school improvements and upgrades at other buildings. Is this proposal something you would strongly favor, favor, oppose or strongly oppose?

## Reconsideration

Total Favor: **72.2%** Total oppose: **25.8%**

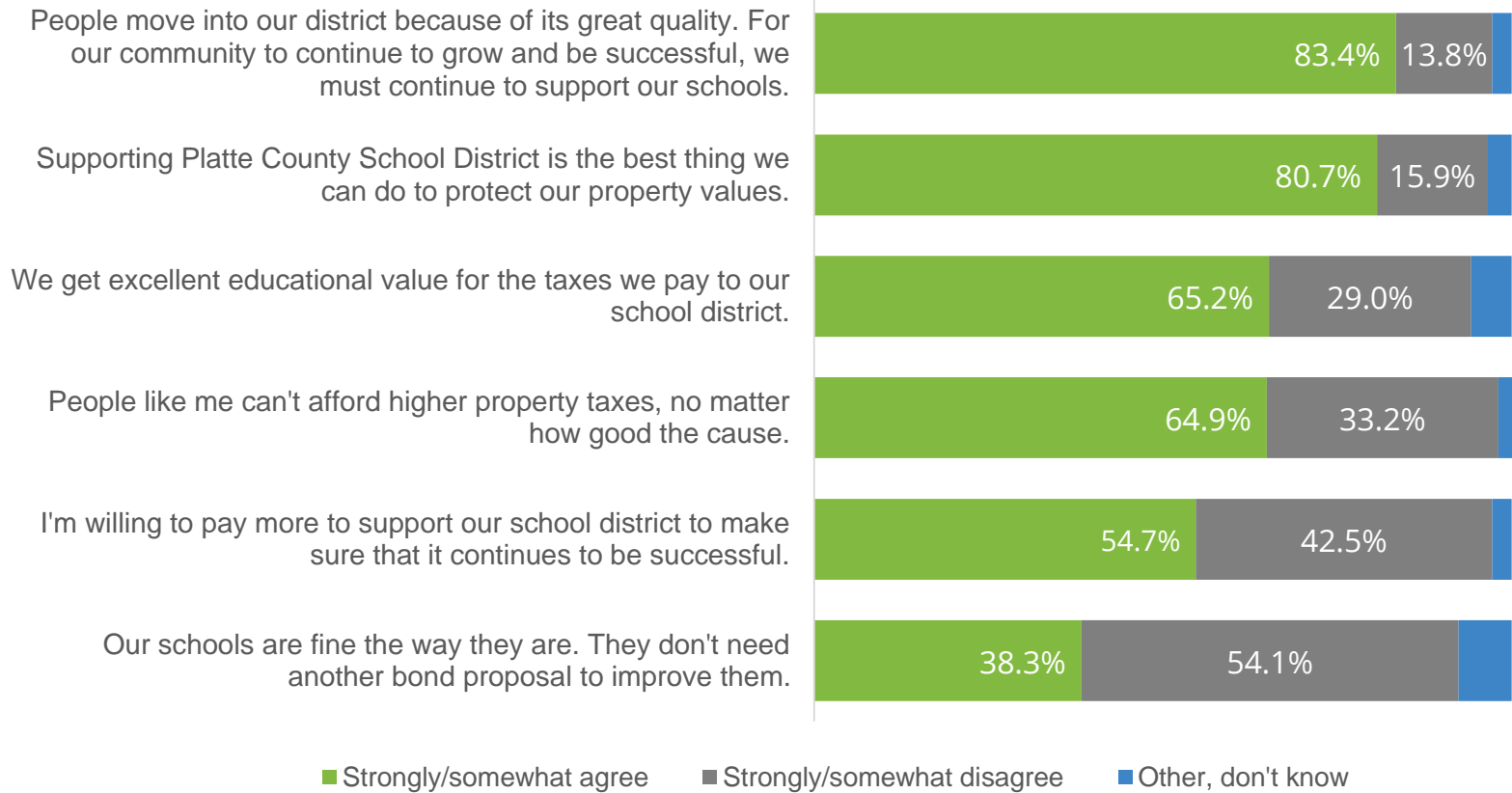
## Follow-up (no tax rate increase)

Total Favor **34.1%** Total Oppose **58.0%**



*[if opposed/undecided/don't know]* Because the district has retired previous debt, passing this proposal will not increase the property tax rate. Knowing that the rate will remain the same, is this proposal something you would strongly favor, favor, oppose or strongly oppose?

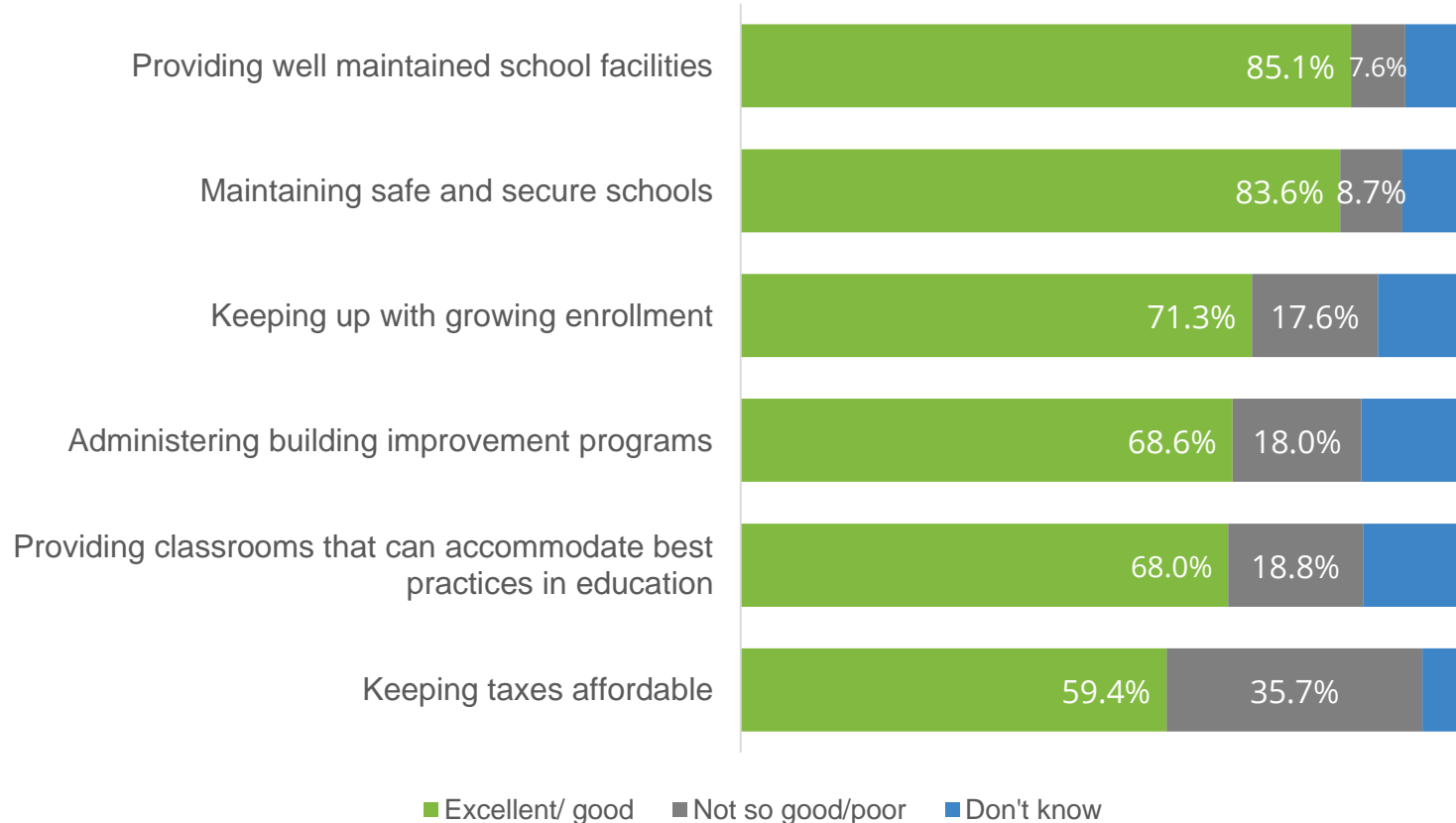
# STATEMENTS ABOUT LOCAL PUBLIC SCHOOLS



# STATEMENTS ABOUT LOCAL PUBLIC SCHOOLS

| Question  | Strongly agree | Strongly/<br>somewhat agree | Strongly/<br>somewhat disagree |
|---|----------------|-----------------------------|--------------------------------|
| People move into our district because of its great quality. For our community to continue to grow and be successful, we must continue to support our schools. | 43.2%          | 83.4%                       | 13.8%                          |
| Supporting Platte County School District is the best thing we can do to protect our property values.  | 31.3%          | 80.7%                       | 15.9%                          |
| We get excellent educational value for the taxes we pay to our school district.   | 23.1%          | 65.2%                       | 29.0%                          |
| People like me can't afford higher property taxes, no matter how good the cause.  | 37.8%          | 64.9%                       | 33.2%                          |
| I'm willing to pay more to support our school district to make sure that it continues to be successful.   | 21.6%          | 54.7%                       | 42.5%                          |
| Our schools are fine the way they are. They don't need another bond proposal to improve them.   | 15.8%          | 38.3%                       | 54.1%                          |

# PLATTE COUNTY DISTRICT PERFORMANCE

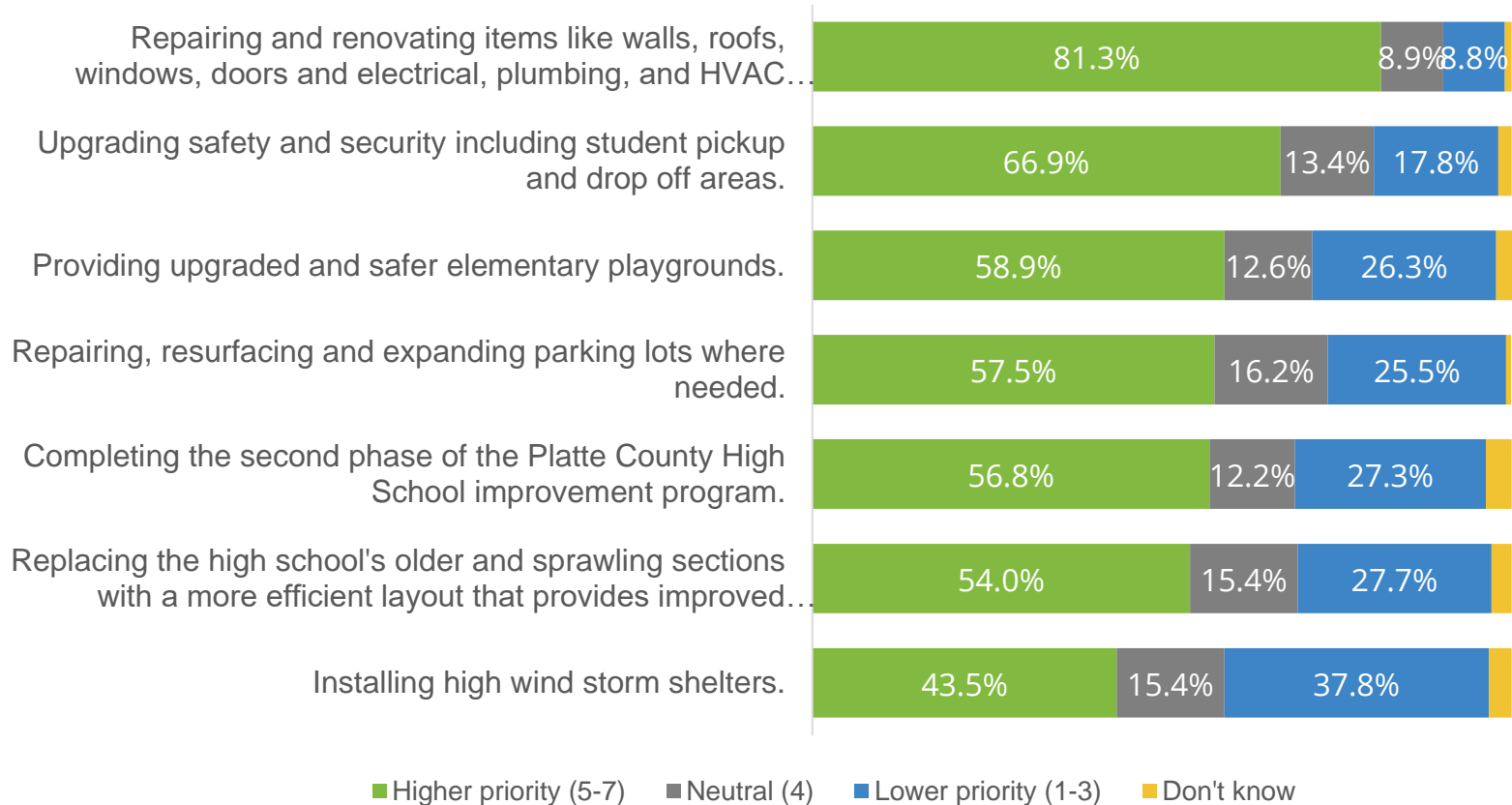


# PLATTE COUNTY DISTRICT PERFORMANCE

| <b>Question</b>   | <b>Excellent</b> | <b>Excellent/<br/>Good</b> | <b>Not so good/<br/>Poor</b> |
|---|------------------|----------------------------|------------------------------|
| Providing well maintained school facilities                           | 28.5%            | 85.1%                      | 7.6%                         |
| Maintaining safe and secure schools                                   | 28.8%            | 83.6%                      | 8.7%                         |
| Keeping up with growing enrollment                                    | 17.3%            | 71.3%                      | 17.6%                        |
| Administering building improvement programs                           | 15.6%            | 68.6%                      | 18.0%                        |
| Providing classrooms that can accommodate best practices in education | 15.0%            | 68.0%                      | 18.8%                        |
| Keeping taxes affordable  | 10.0%            | 59.4%                      | 35.7%                        |



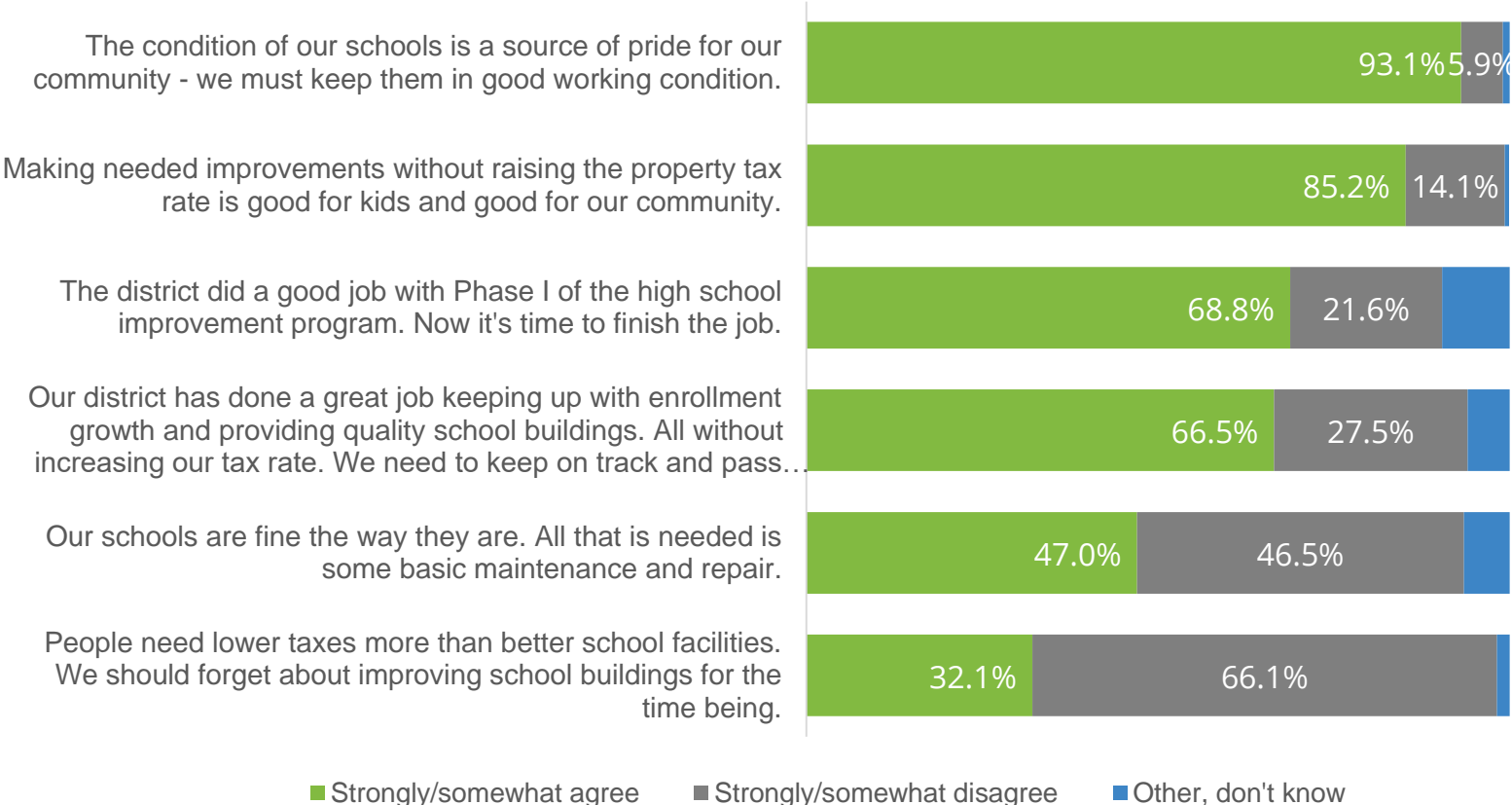
# PRIORITIES FOR DISTRICT IMPROVEMENTS



# PRIORITIES FOR DISTRICT IMPROVEMENTS

| <b>Question</b>  | <b><i>High<br/>priority<br/>(7)</i></b> | <b><i>Higher<br/>priority<br/>(5-7)</i></b> | <b><i>Neutral<br/>(4)</i></b> | <b><i>Lower<br/>priority<br/>(1-3)</i></b> |
|--|---|---|-------------------------------|--|
| Repairing and renovating items like walls, roofs, windows, doors and electrical, plumbing, and HVAC systems where needed.        | 33.3%                                   | 81.3%                                       | 8.9%                          | 8.8%                                       |
| Upgrading safety and security including student pickup and drop off areas.   | 30.5%                                   | 66.9%                                       | 13.4%                         | 17.8%                                      |
| Providing upgraded and safer elementary playgrounds.   | 17.8%                                   | 58.9%                                       | 12.6%                         | 26.3%                                      |
| Repairing, resurfacing and expanding parking lots where needed.  | 11.2%                                   | 57.5%                                       | 16.2%                         | 25.5%                                      |
| Completing the second phase of the Platte County High School improvement program.  | 15.3%                                   | 56.8%                                       | 12.2%                         | 27.3%                                      |
| Replacing the high school's older and sprawling sections with a more efficient layout that provides improved educational spaces. | 13.3%                                   | 54.0%                                       | 15.4%                         | 27.7%                                      |
| Installing high wind storm shelters.   | 14.1%                                   | 43.5%                                       | 15.4%                         | 37.8%                                      |

# STATEMENTS ABOUT A POSSIBLE PROPOSAL



# STATEMENTS ABOUT A POSSIBLE PROPOSAL

| Question   | Strongly agree | Strongly/<br>somewhat agree | Strongly/<br>somewhat disagree |
|--|----------------|-----------------------------|--------------------------------|
| The condition of our schools is a source of pride for our community - we must keep them in good working condition.   | 51.4%          | 93.1%                       | 5.9%                           |
| Making needed improvements without raising the property tax rate is good for kids and good for our community.  | 56.1%          | 85.2%                       | 14.1%                          |
| The district did a good job with Phase I of the high school improvement program. Now it's time to finish the job.  | 29.4%          | 68.8%                       | 21.6%                          |
| Our district has done a great job keeping up with enrollment growth and providing quality school buildings. All without increasing our tax rate. We need to keep on track and pass this zero-rate-increase proposal. | 28.4%          | 66.5%                       | 27.5%                          |
| Our schools are fine the way they are. All that is needed is some basic maintenance and repair.  | 16.4%          | 47.0%                       | 46.5%                          |
| People need lower taxes more than better school facilities. We should forget about improving school buildings for the time being.  | 11.0%          | 32.1%                       | 66.1%                          |

# Questions?



**CREATIVE  
ENTOURAGE**  
RESEARCH