

2025 Bond Project Design

November 2024





POTENTIAL PROJECTS



Compass Parking Expansion

- » Increase parking from 114 to 202 total stalls
- » Improve traffic flow for arrival and dismissal



COMPASS ELEMENTARY SCHOOL TRAFFIC CIRCULATION AND IMPROVEMENT PLAN CONCEPT B PLATTE CITY, MISSOURI 64079

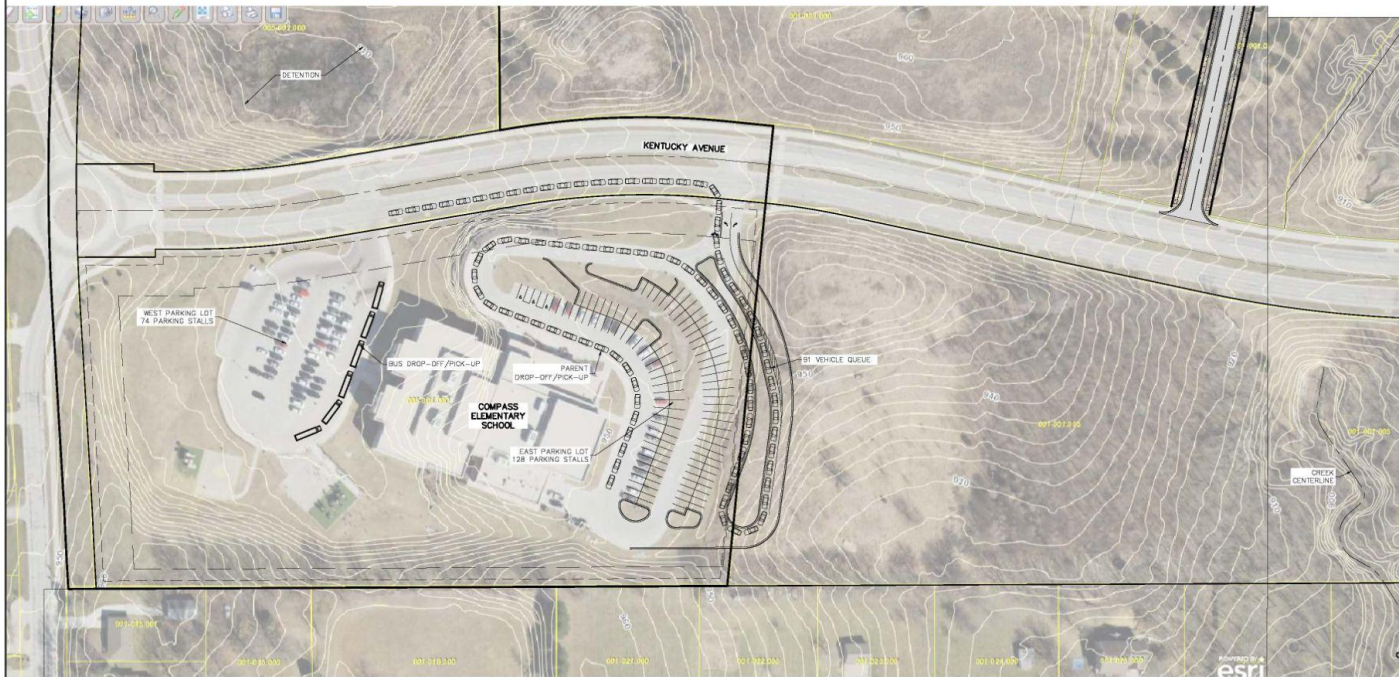
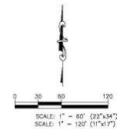
PREPARED FOR:
PLATTE COUNTY SCHOOL DISTRICT
308 PLATTE FALLS ROAD
PLATTE CITY, MISSOURI 64079
PHONE: (816) 858-3420
CONTACT: JAY HARRIS
EMAIL: harrisj@plattco.k12.mo.us

PREPARED BY:
KAW VALLEY ENGINEERING, INC.
14200 W 114TH STREET
LENEXA, KANSAS 66215
PHONE: (913) 894-8105
CONTACT: DAVID WOOD
EMAIL: wood@kveeng.com

PARKING SUMMARY:

WEST LOT	EXISTING/PROPOSED:	74 PARKING STALLS
EAST LOT:	EXISTING:	40 PARKING STALLS
	PROPOSED:	128 PARKING STALLS
TOTAL:	EXISTING:	114 PARKING STALLS
	PROPOSED:	202 PARKING STALLS

→ PARENT PICKUP/DROP-OFF
→ BUS PICKUP/DROP-OFF



KAW VALLEY ENGINEERING, INC.
 LOCAL, KANSAS AND MISSOURI
 OFFICES
 PH: (913) 894-8105 | www.kveeng.com
KAW VALLEY ENGINEERING
 KAW VALLEY ENGINEERING, INC. IS AUTHORIZED TO OPERATE ENGINEERING
 EXEMPT LICENSE # B-00004977

COMPASS ES
401 KENTUCKY AVE
PLATTE CITY, MISSOURI 64079
TRAFFIC CIRCULATION AND
IMPROVEMENT PLAN CONCEPT B

PROJECT: C19_0452
 PREPARED BY: DWM
 DATE: N.M.
 DRAWING NO.: COMPASS BASE 2
 SHEET NO.: 01 B

REV	DATE	DESCRIPTION

DSN DWN CHK

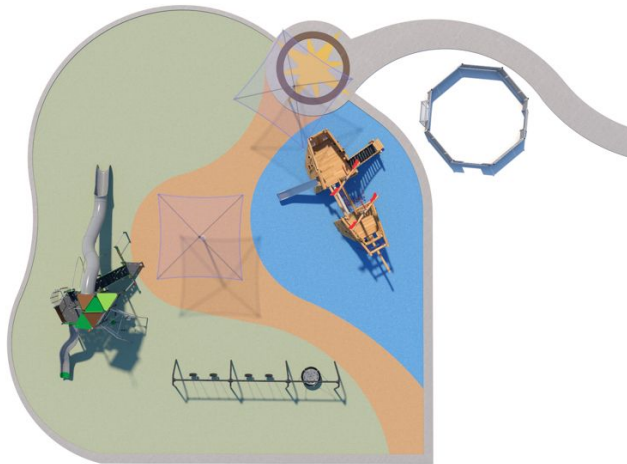
THIS DRAWING SHALL NOT BE UTILIZED BY ANY PERSON, FIRM, OR CORPORATION IN WHOLE OR IN PART WITHOUT THE SPECIFIC PERMISSION OF KAW VALLEY ENGINEERING, INC.

Improvements to Barry/Pathfinder

- » New Playground At Pathfinder Site (*2025 Bond*)
- » Remodel Existing Playground (*Summer 2026/Capital Outlay*)







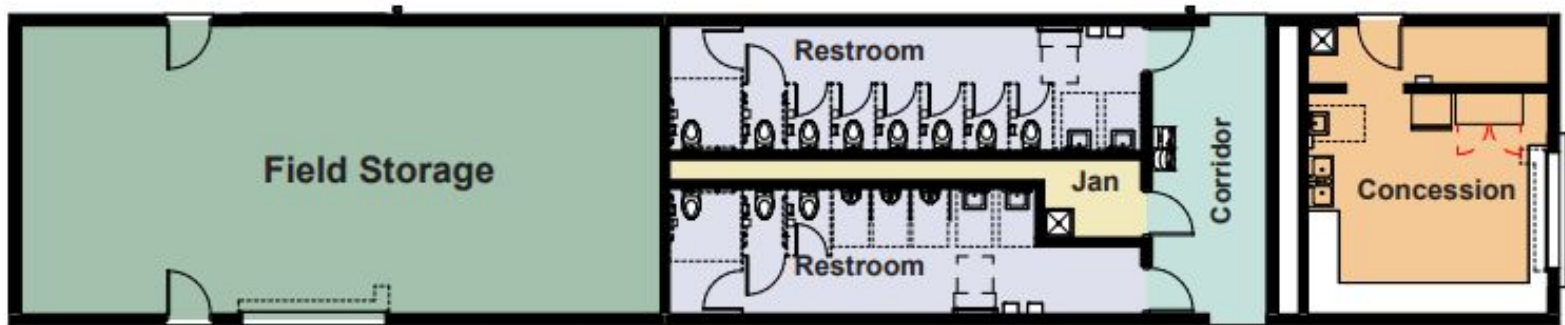
Platte Purchase Site Amenities

- » Construction of concession, restroom, and storage for Platte Purchase Activities Complex



**PLATTE PURCHASE
SITE AMENITIES**





11.14.2024

Pirate Athletic Complex / Field Building Platte Purchase Middle School



hollis + miller
architects

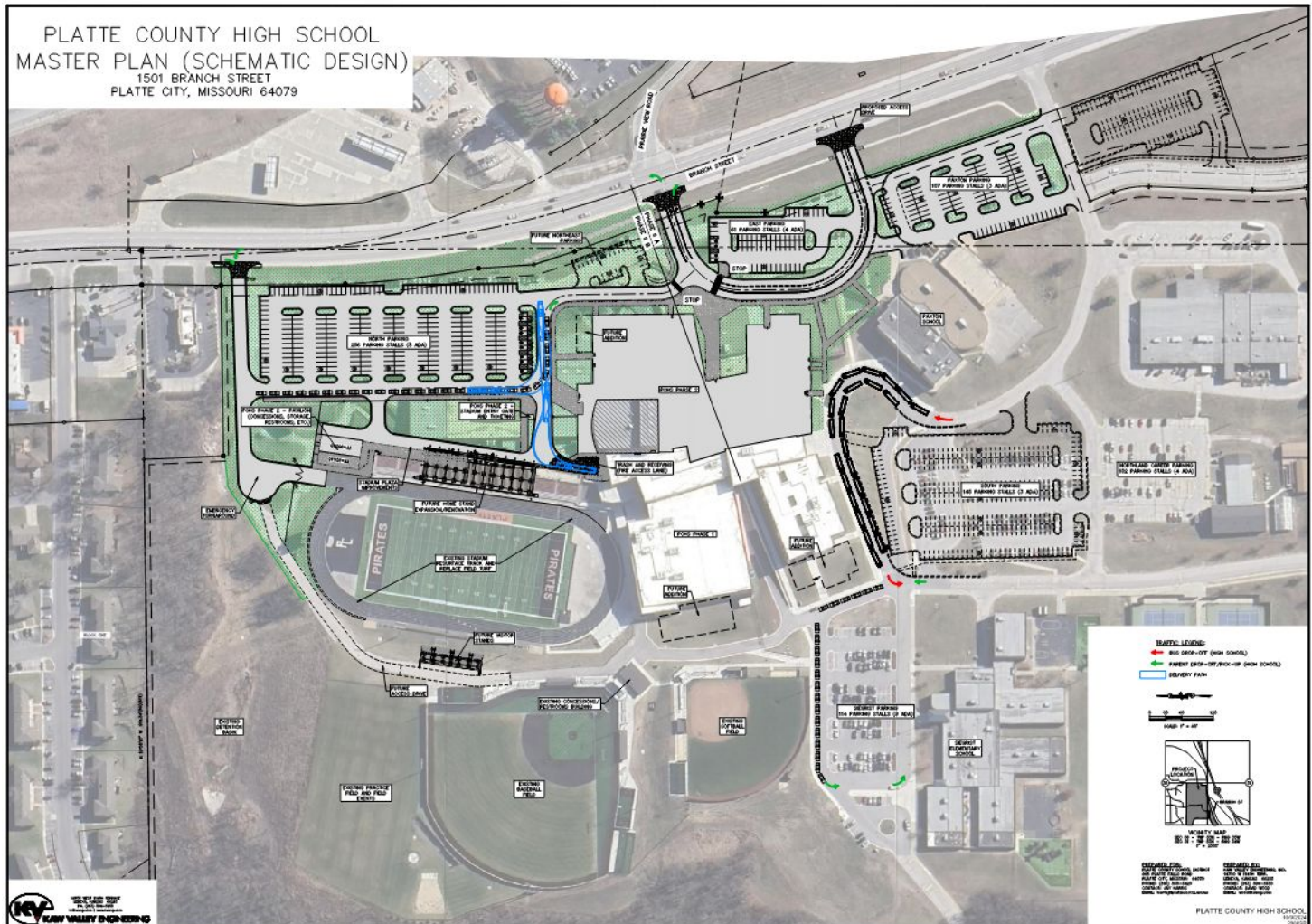


PCHS REBUILD PHASE TWO

» **Facility Design** (115,000 SF)

- Two-story classroom wing (50 classrooms including FACS, marketing, business, PLTW engineering + standard)
- Media Center
- Performing Arts wing (expanded art, band, and vocal rooms, black box theater, and public-facing auditorium entry)
- Administrative areas and secured entry
- Additional parking, Pirate Stadium concessions/restrooms
- Improvements to vehicular and pedestrian traffic

PLATTE COUNTY HIGH SCHOOL
 MASTER PLAN (SCHEMATIC DESIGN)
 1501 BRANCH STREET
 PLATTE CITY, MISSOURI 64079



PREPARED BY: K&V VALLEY ENGINEERING
 1501 BRANCH STREET
 PLATTE CITY, MISSOURI 64079
 PHONE: 660.242.2222
 FAX: 660.242.2223
 WWW: WWW.K&VVALLEY.COM

DATE: 08/15/2018
 DRAWN BY: J. HARRIS
 CHECKED BY: J. HARRIS
 PROJECT NO.: 18-001



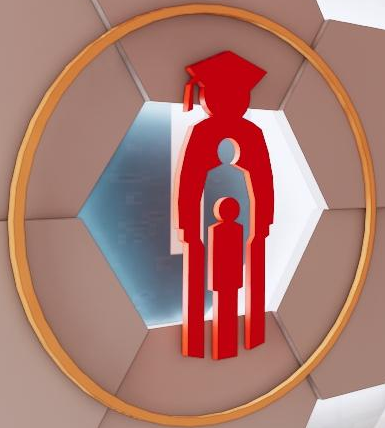




THE WILSON CENTER
FOR THE PERFORMING ARTS

WILSON CENTER
FOR THE PERFORMING ARTS

PORTRAIT OF A GRADUATE



PIRATE NATION



THE WILSON CENTER FOR THE PERFORMING ARTS





PIRATES
UNITED BY PRIDE
DRIVEN BY PURPOSE

PIRATES



CONCOURSE



CHS

PIRATES
UNITED PRIDE.
GIVEN BY PURPOSE.

PIRATES



PIRATES





FINE ARTS

$$F(u, v)$$

ALBERT EINSTEIN

EXTREME STRESS

BOX

THE BOOK BOON





CROW'S NEST

PIRATES
UNIVERSITY
COLLEGE OF BUSINESS

PIRATE
NEWS

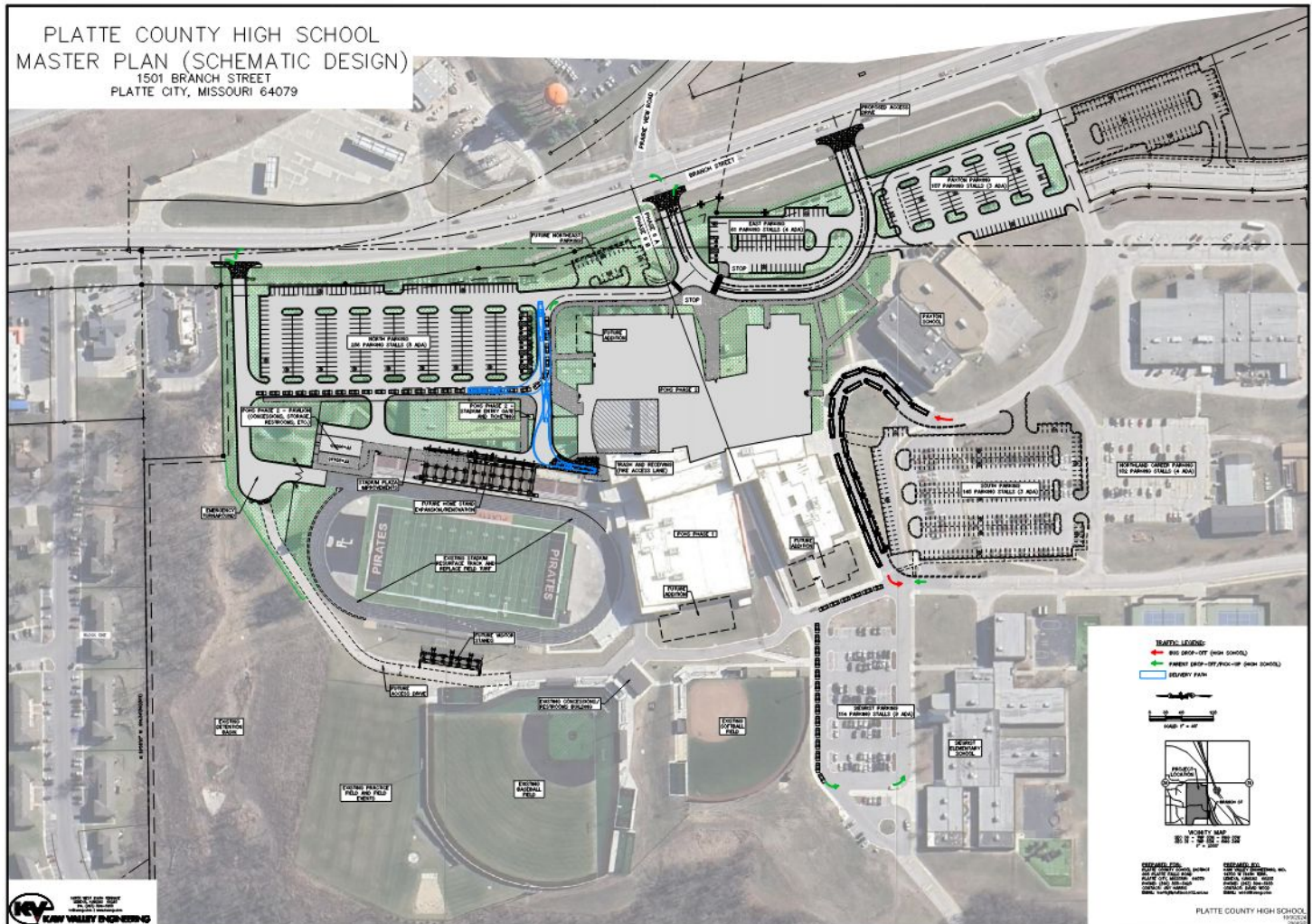






THE
HELM

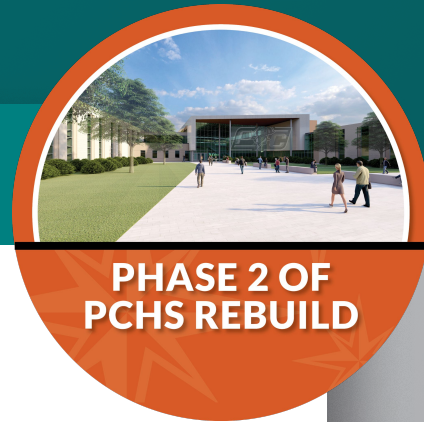
PLATTE COUNTY HIGH SCHOOL
 MASTER PLAN (SCHEMATIC DESIGN)
 1501 BRANCH STREET
 PLATTE CITY, MISSOURI 64079



PREPARED BY: K&V KAW VALLEY ENGINEERING
 1501 BRANCH STREET
 PLATTE CITY, MISSOURI 64079
 PHONE: 660.242.1111
 WWW.K&VENGINEERING.COM

DATE: 08/15/2018
 DRAWN BY: J. H. HARRIS
 CHECKED BY: J. H. HARRIS
 SCALE: AS SHOWN

Phase Two Logistics



**PHASE 2 OF
PCHS REBUILD**

» April-May

- PCHS staff begins packing rooms for relocation of rooms
 - Boxes will be provided
 - All classrooms will be moved during the week of May 26th

» June

- Demo begins of south classrooms, administration area, band, and vocal

» August 2025 - December 2026

- PCHS operates out of Phase one, North end of PCHS, and Paxton

» January 2027 (Winter Break Move)

- Move into Phase two of PCHS

» January 2027 - August 2027

- Demo North end of PCHS and construct new parking lot, Pirate Stadium concessions/restrooms and entryway

THANK
YOU

