



**NEWKIRK
NOVAK**
CONSTRUCTION PARTNERS

Platte County High School Phase 1 Rebuild

BOARD UPDATE PRESENTATION

Thursday, April 21st, 2022

CLASSROOM WING & SOUTH ENTRY



This month's activity

- Glazing
- Metal Siding
- Interior Finishes





Classroom Wing - Interior Finishes





COMMONS, GYM & LOCKER ROOMS



This month's activity

- Roofing
- Glazing
- Concrete Slabs
- MEP Rough In
- Drywall
- Interior Block Walls





Cafeteria



Kitchen





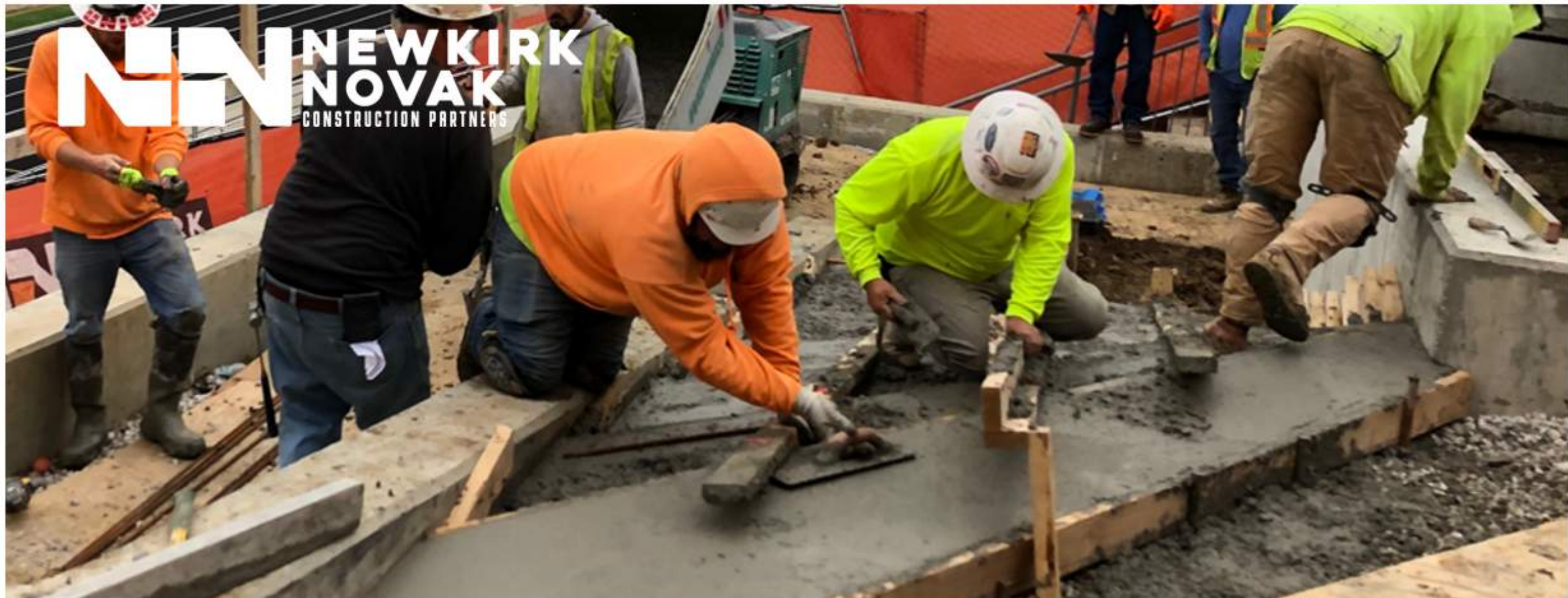
Locker Rooms





GYM





THANK YOU

Matt St. Louis, Project Manager
matt.st.louis@newkirknovak.com