

Elementary Specials Process & Planning 2024-2025

December 2023





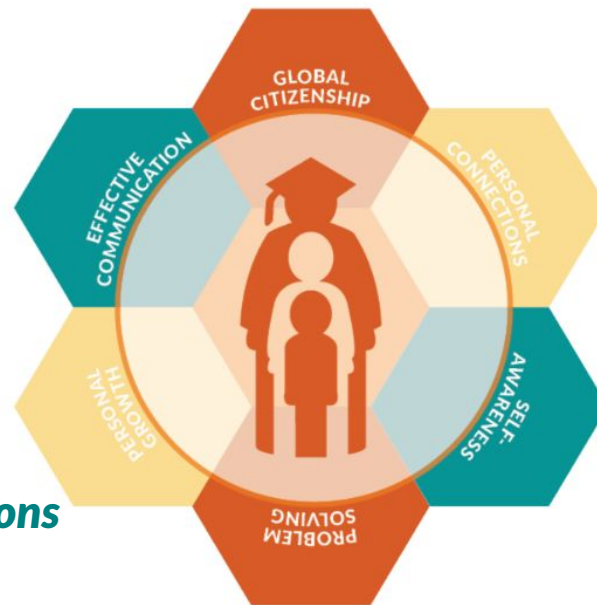
Programming...*Building learners of tomorrow...*

Why

Goal: To provide learning opportunities with a strong focus on literacy and numeracy, and experiences that develop the core skills outlined by the *PCR-3 Portrait of a Graduate*.

Values

**** Innovation * Student-focused * High Expectations***





Programming Factors

- Academic experience and impact
- State requirements/ guidelines for minutes within the day
- Preparation and alignment to Portrait of a Graduate
- State guidelines for teacher planning period requirements
- Number of sections within the building
- Staffing levels and certifications
- Curriculum and Scheduling
- Financial Impact
- Stakeholder Feedback



Early Predictions of Section Numbers

	K	1	2	3	4	5
Barry	3	3	3	3	2	3
Pathfinder	4	4	3	4	3	3
Compass	4	4	4	4	4	4
Siegrist	5	5	5	4	6	4

FACTORS for Specials:

- 1) # of offerings (4)
- 2) # of sections
- 3) # days in rotation

Current Offerings:

PE

Music

Library

Art

Guidance/
Counseling



Programming Timeline



Innovation Worksession (Academic Senate)

Feedback and brainstorming of what experiences we want our learners to have in early years

Innovation Worksession (Prin Team)-Nov

Sections released and options shared; Principal team determined to hold on new options due to changes with the addition of new school



Innovation Worksession (Prin Team)-Oct-Dec

Oct. Brainstorming review
Nov. Review of barriers
Review of Academic Senate results

Innovation Worksession (Acad Sen. Team)-Dec

Elementary members of Academic Senate will participate in additional brainstorming and defining of elementary learning experiences

Dec.

Next Steps



Decision Worksession (Prin Team)-Jan

The admin team will determine programming for 2024-25

Planning Worksession (Prin Team)-Jan

Individual building leadership will work to establish curriculum development, master scheduling and communication regarding future changes



Staffing

Plan and secure staff to support programming decisions

Communication

Create communication for internal as well as external communication



Questions