

Platte County R-3 School District Community Survey Overview

November 16, 2023



BACKGROUND & METHODOLOGY

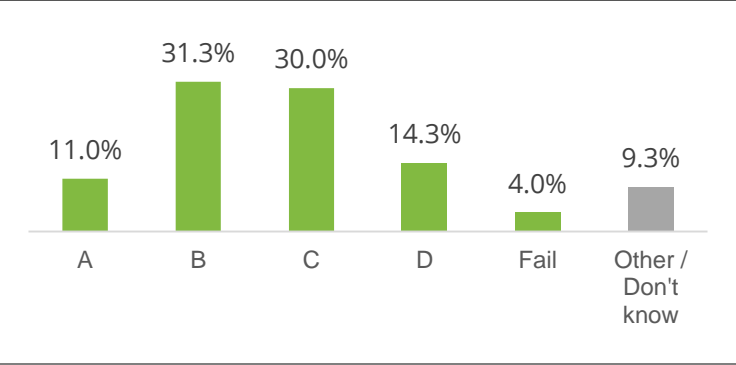
- Phone survey conducted October-November 2023
- 300 completed surveys

GRADING MISSOURI/DISTRICT SCHOOLS

State of Missouri

A-B
42.3%

D-Fail
18.3%



Platte County R-3 School District

A-B
64.7%

D-Fail
8.0%

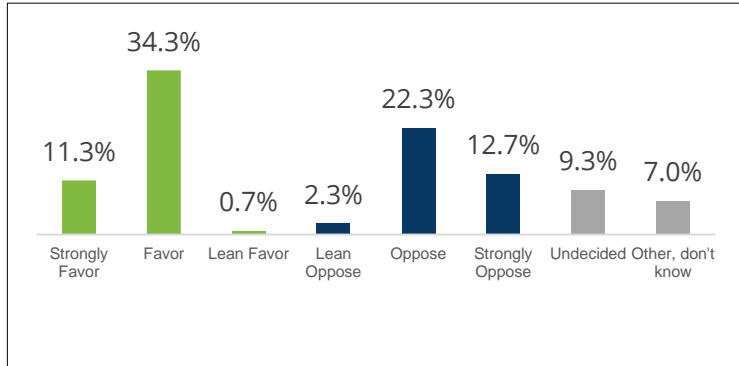


POSSIBLE PROP C ROLLBACK PROPOSAL

Initial Question

Total Favor
46.3%

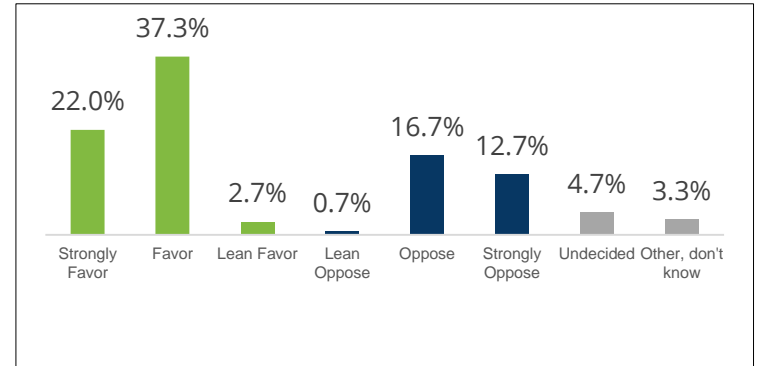
Total Oppose
37.3%



Reconsideration

Total Favor
62.0%

Total Oppose
30.0%

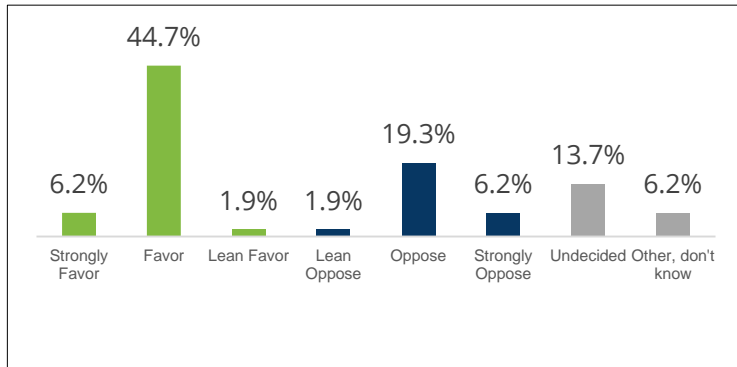


IF NOT IN FAVOR: OPTION TO RETIRE BOND DEBT TO OFFSET ROLLBACK TAX RATE INCREASE

Initial Question

Total Favor
52.8%

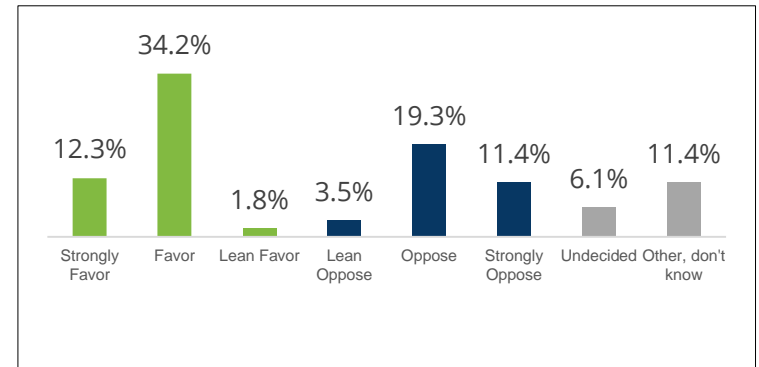
Total Oppose
27.3%



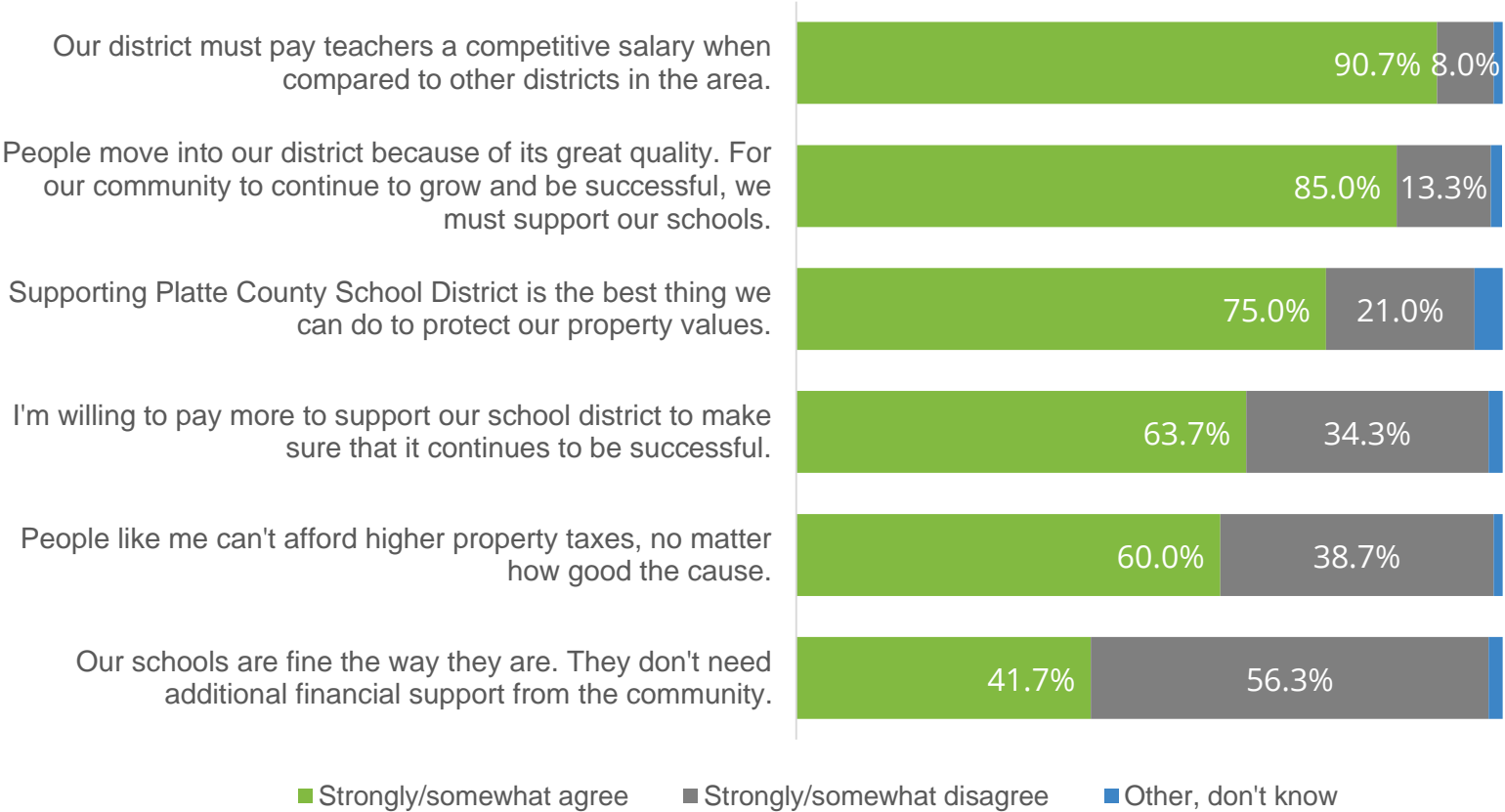
Reconsideration

Total Favor
48.2%

Total Oppose
34.2%



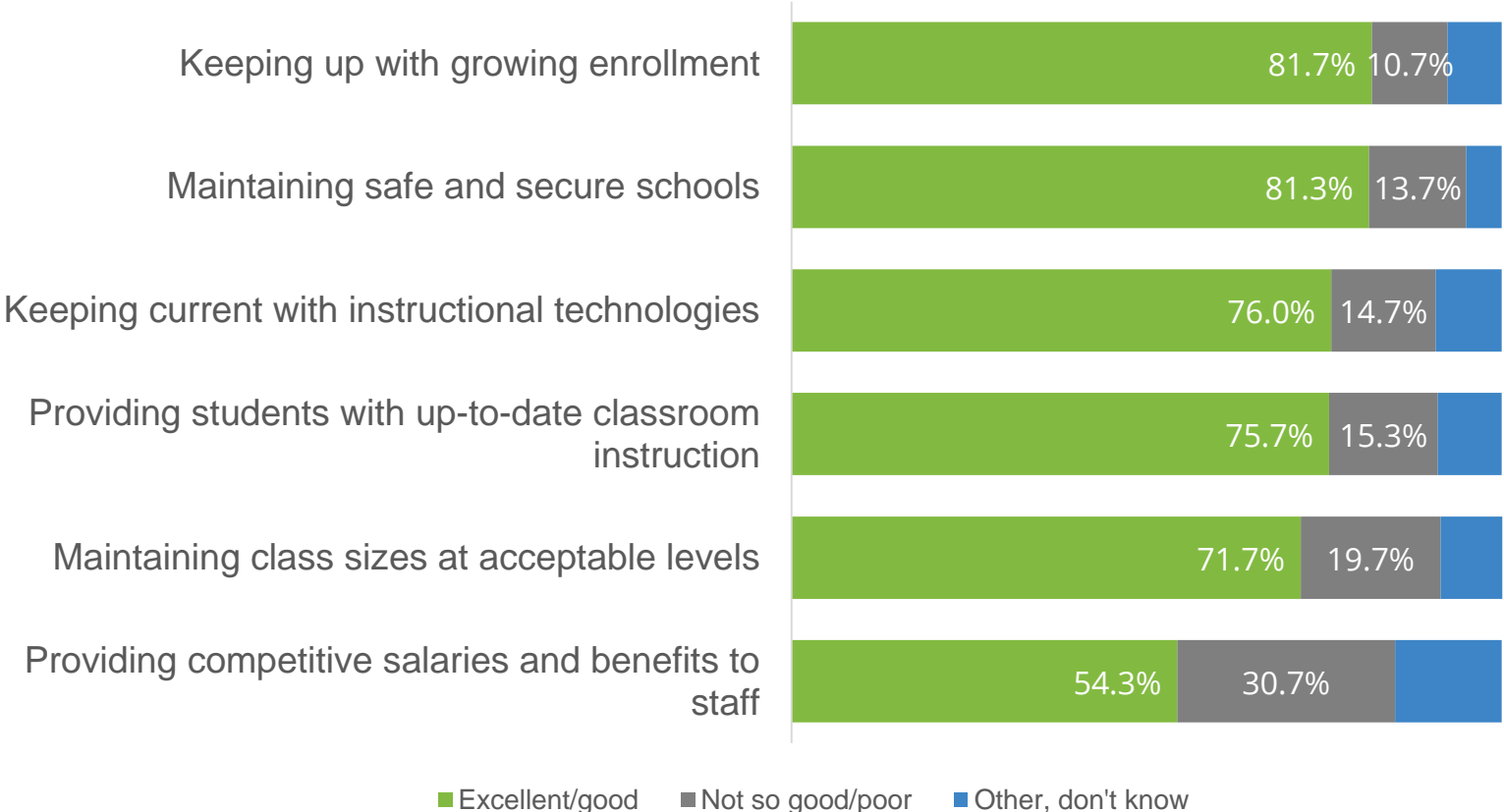
STATEMENTS ABOUT LOCAL PUBLIC SCHOOLS



STATEMENTS ABOUT LOCAL PUBLIC SCHOOLS

Question	Strongly agree	Total agree	Total disagree
Supporting Platte County School District is the best thing we can do to protect our property values.	36.7%	75.0%	21.0%
People like me can't afford higher property taxes, no matter how good the cause.	35.0%	60.0%	38.7%
Our district must pay teachers a competitive salary when compared to other districts in the area.	69.3%	90.7%	8.0%
I'm willing to pay more to support our school district to make sure that it continues to be successful.	29.0%	63.7%	34.3%
Our schools are fine the way they are. They don't need additional financial support from the community.	20.7%	41.7%	56.3%
People move into our district because of its great quality. For our community to continue to grow and be successful, we must support our schools.	58.3%	85.0%	13.3%

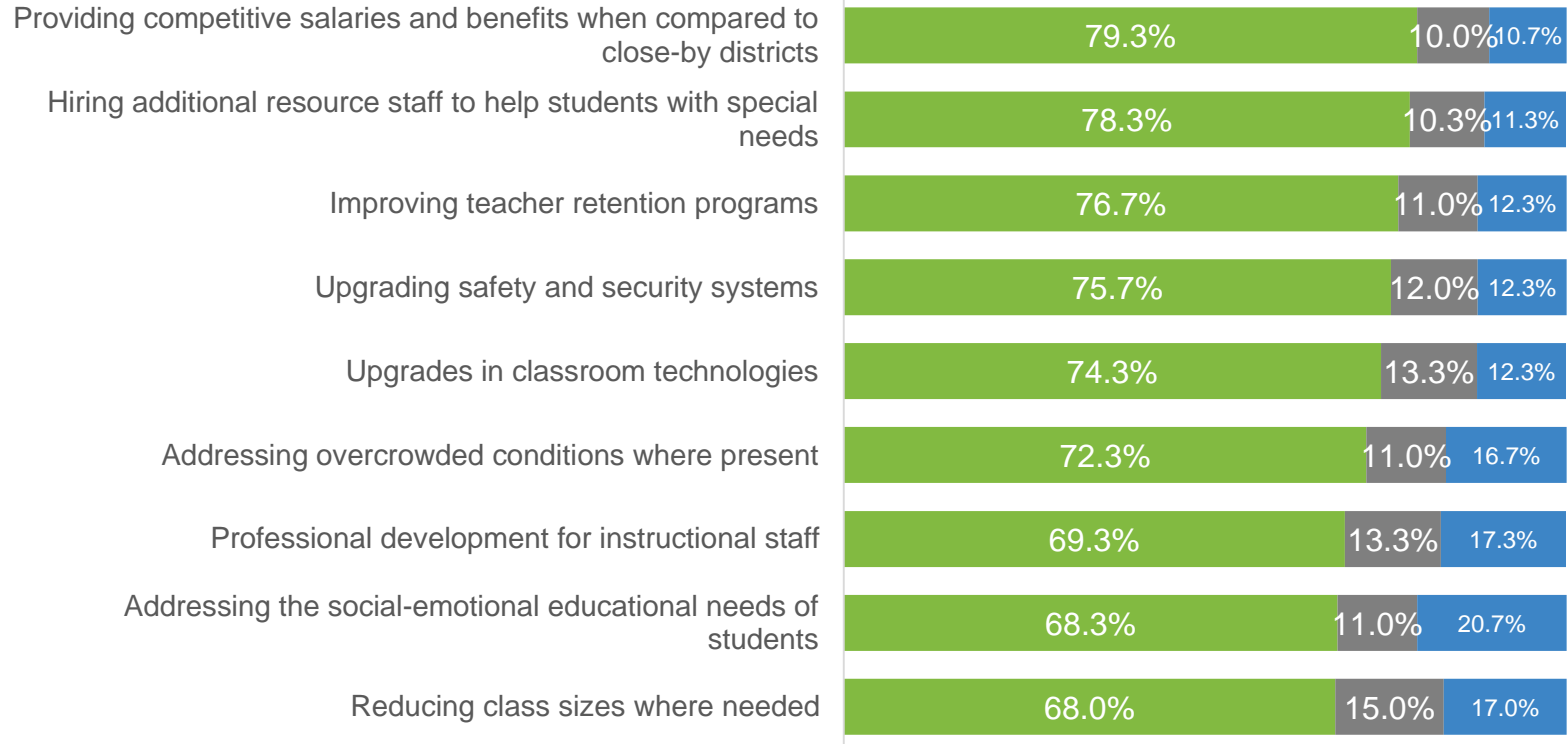
PLATTE COUNTY R-3 DISTRICT PERFORMANCE



PLATTE COUNTY R-3 DISTRICT PERFORMANCE

Question	Excellent	Excellent/ good	Not so good/ poor
Providing students with up-to-date classroom instruction	16.0%	75.7%	15.3%
Maintaining safe and secure schools	24.3%	81.3%	13.7%
Keeping up with growing enrollment	19.7%	81.7%	10.7%
Providing competitive salaries and benefits to staff	7.7%	54.3%	30.7%
Keeping current with instructional technologies	20.7%	76.0%	14.7%
Maintaining class sizes at acceptable levels	17.7%	71.7%	19.7%

PRIORITIES FOR DISTRICT IMPROVEMENTS

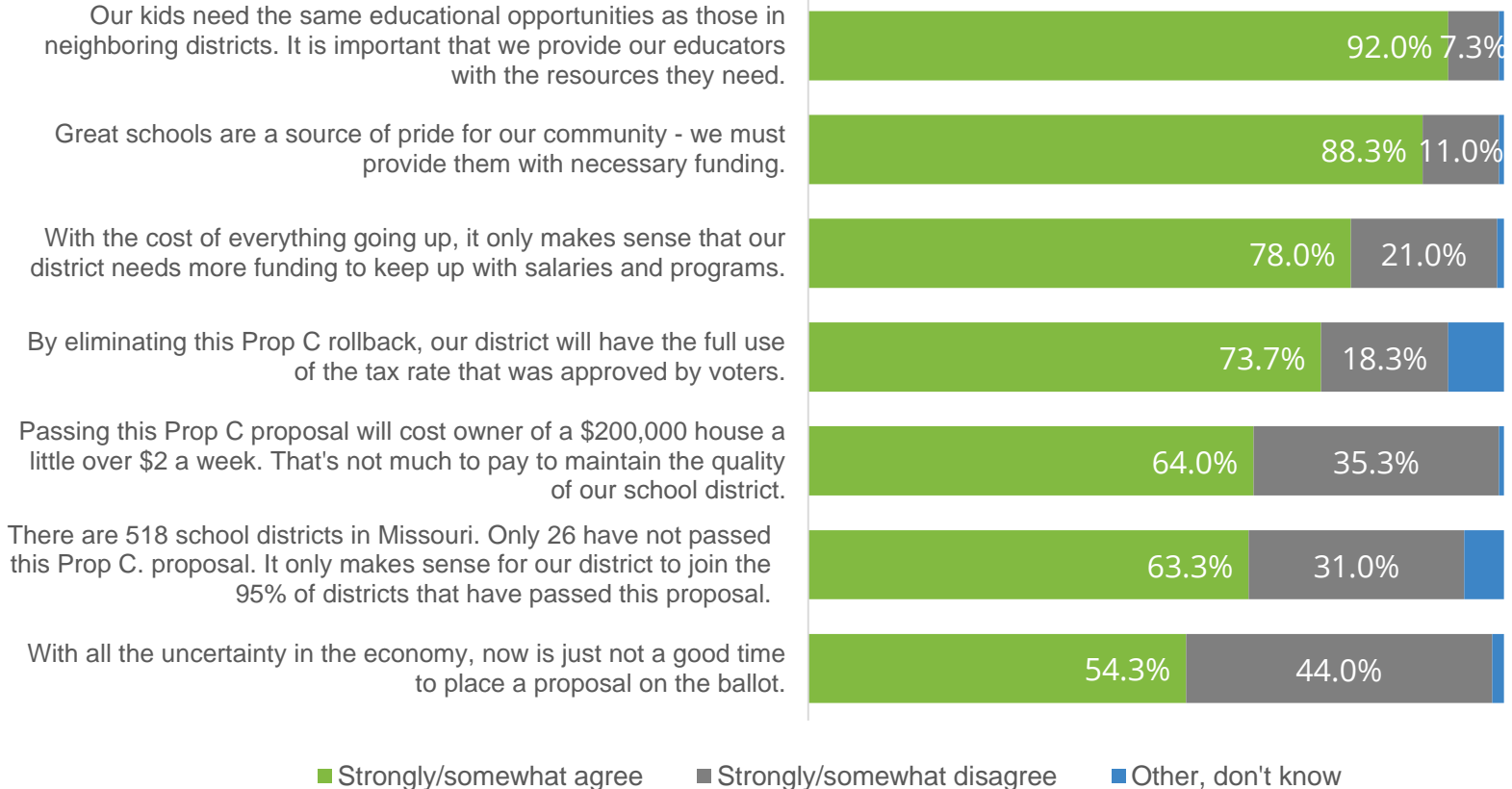


■ High Priority (5-7) ■ Neutral (4) ■ Low Priority (1-3)

PRIORITIES FOR DISTRICT IMPROVEMENTS

Question	Very high priority (7)	High priority (5-7)	Low priority (1-3)
Professional development for instructional staff	24.0%	69.3%	17.3%
Upgrades in classroom technologies	23.7%	74.3%	12.3%
Providing competitive salaries and benefits when compared to close-by districts	45.0%	79.3%	10.7%
Reducing class sizes where needed	26.3%	68.0%	17.0%
Addressing overcrowded conditions where present	29.7%	72.3%	16.7%
Upgrading safety and security systems	40.0%	75.7%	12.3%
Improving teacher retention programs	36.0%	76.7%	12.3%
Addressing the social-emotional educational needs of students	31.0%	68.3%	20.7%
Hiring additional resource staff to help students with special needs	38.3%	78.3%	11.3%

STATEMENTS ABOUT A PROP C ROLLBACK PROPOSAL



STATEMENTS ABOUT A PROP C ROLLBACK PROPOSAL

Question	Strongly agree	Total agree	Total disagree
Great schools are a source of pride for our community - we must provide them with necessary funding.	53.0%	88.3%	11.0%
There are 518 school districts in Missouri. Only 26 have not passed this Prop C. proposal. It only makes sense for our district to join the 95% of districts that have passed this proposal.	26.0%	63.3%	31.0%
With the cost of everything going up, it only makes sense that our district needs more funding to keep up with salaries and programs.	40.7%	78.0%	21.0%
With all the uncertainty in the economy, now is just not a good time to place a proposal on the ballot.	29.3%	54.3%	44.0%

STATEMENTS ABOUT A PROP C ROLLBACK PROPOSAL

Question	Strongly agree	Total agree	Total disagree
Our kids need the same educational opportunities as those in neighboring districts. It is important that we provide our educators with the resources they need.	61.7%	92.0%	7.3%
By eliminating this Prop C rollback, our district will have the full use of the tax rate that was approved by voters.	25.0%	73.7%	18.3%
Passing this Prop C proposal will cost owner of a \$200,000 house a little over \$2 a week. That's not much to pay to maintain the quality of our school district.	33.3%	64.0%	35.3%

Questions?



**CREATIVE
ENTOURAGE**
RESEARCH