



Platte County High School Phase 1 Rebuild

BOARD UPDATE PRESENTATION

Thursday, June 16th, 2022

CLASSROOM WING & SOUTH ENTRY



This month's activity

- Metal Siding
- Sidewalks
- RTU Startups





Classroom Wing Interiors

This month's activity

- Handrails
- Floor Polish
- Paint
- Lights





COMMONS, GYM & LOCKER ROOMS

This month's activity

- Waterproofing
- Roofing Finished
- Glazing





Learning Commons



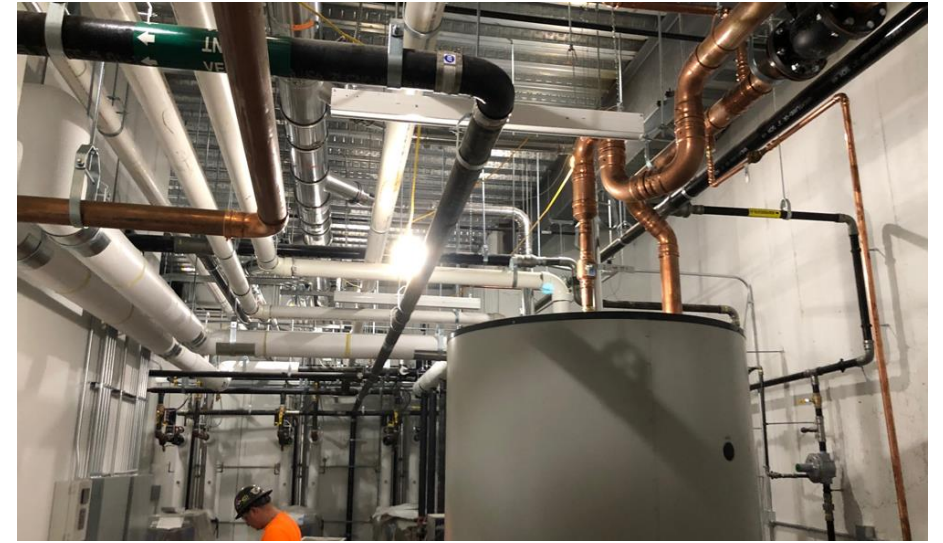


Cafeteria



Locker Rooms, Central Plant & IT Corridor

- CMU Install
- MEP Rough In
- Drywall
- Interior Glazing





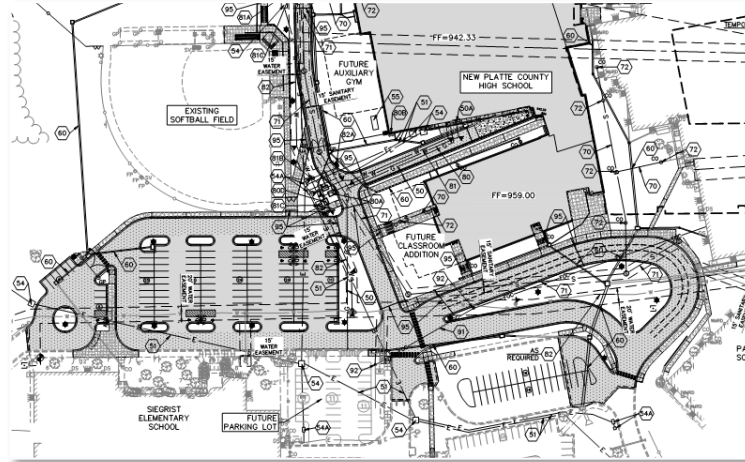
GYM

- MEP Rough In
- Framing



Site Work

- Demolition
- Sidewalks





THANK YOU

Matt St. Louis, Project Manager
matt.st.louis@newkirknovak.com